

*from the ceo's desk.....*

May has seen me on the road a fair bit, and this will continue as the team and I make the most of sub-40 degree temperatures ..... I am currently supporting the **RDA Townsville and North West Queensland (RDA TNWQ) State of the Region Road Shows** in both my capacity as **Deputy Chair** and **MITEZ CEO**. RDA TNWQ, in partnership with **Regional Economic Advisory (REA)**, are delivering their 2026 State of the Region Roadshow with visits to their 14 LGAs. I'm supporting as one of the guest speakers at the MITEZ LGAs. To date, my visits have included Council and stakeholder briefings in Townsville, Julia Creek and Richmond, alongside a public Richmond Insights Session designed to bring together local business, industry and community members for discussion on the future of the region.



Discussions focus on the realities facing regional communities including workforce shortages, infrastructure and connectivity, population change, investment attraction and ensuring smaller communities are well positioned to support long-term regional growth. The Roadshow also provides independent regional insights into the economic and investment conditions shaping North and North West Queensland, while also creating opportunities for direct engagement with regional leaders, industry and government representatives.

I caught up with **Multicom's Andrew Napier** on-site at the **Saint Elmo Mine** in Julia Creek. Multicom is processing two product streams: Vanadium Pentoxide and High Purity Alumina (HPA). Their R&D Plant, commissioned last year, is developing Multicom's process intellectual property (IP), and is being utilised to produce, in stages, up to 26,000 tonnes per annum of these critical minerals. Rather than having separate technologies to control each process, Multicom have gone with an integrated solution for the power and control of the plant which is scalable meaning they can integrate new modules more efficiently and have a faster time to market.



The MITEZ team and I have undertaken to volunteer this year at one major event in each of the 7 LGAs. To date we have given some (wo)man power to the **Hughenden Festival of Outback Skies**, the **Charters Towers Festival of Country Music** and the **Julia Creek Dirt and Dust Festival**. I'll be in Richmond helping out at their Field Day and Races on 12/13 June so by mid-year we'll have volunteered at four of our seven LGAs, the remaining three by year end.

Volunteering at these bespoke events is not only a good way to give back to our LGA foundational members but it's an excellent opportunity to connect and chat with everyday members of the community. It also gives you an added perspective on how challenging it is to deliver these events and that it is only possible by rolling up your sleeves and depending on the good will and sturdiness of the people that live, work and love the North West – the other bonus: you get to spread the word about MITEZ outside of meeting rooms and on-line forums. Thank you too Jenn and Emily for going above and beyond for MITEZ.

I was fortunate to be invited to the **Regional Gateway Program** announcement with **Minister Steve Minnikin**. The Regional Business Gateways Program offers funding to local business communities to design and deliver initiatives that unlock regional opportunities and build long-term economic capacity. The program supports collaborative, community-led projects that identify a specific challenge or opportunity for regional small businesses and put in place a plan to deliver improved capability. Examples include projects which support local small and family businesses to connect into supply chains and procurement opportunities, accelerate capability and growth for emerging businesses, or improve operational capability and coordination across sectors.

A total of **\$4 million** is available for round 1 of the program. Funds ranging from **\$250,000 to \$600,000 (excluding GST)** are available to eligible applicants for collaborative, community-led and designed projects that respond to local small business needs. Co-contribution is not required but is encouraged. Eligibility is open to regional Queensland local councils, chambers of commerce and industry/trade not-for-profit organisations. Expressions of interest for Round 1 are open and close **17 July 2026**.



I'm also delighted to have had an introductory meeting with **Jason Needham** and **Jessica Alves** from **CRU**, together with **Travis Whebell**, who are undertaking the Government's Mount Isa Transformation Study. The team come across as deeply competent and switched on, keen to understand, and already aware of some of the nuances of the North West. MITEZ is looking forward to engaging with them further in terms of stakeholder consultation.

## Consortium appointed to lead Mount Isa Transformation Study

Work has officially begun on the Mount Isa Transformation Study, part of the joint Queensland and Australian Government support package for the Mount Isa copper smelter and Townsville copper refinery.

A consortium led by **CRU International (Australia)** will deliver the study, bringing together industry specialists to assess the full copper value chain from Mount Isa to Townsville. The work will explore future pathways for the region, including long-term industrial capability and broader regional impacts.

Consultation with industry, local government, workers and the community will form a key part of the process, with stakeholder engagement set to begin shortly.

Stay up to date:

Updates will be shared via email and published online by the Department of Natural Resources and Mines, Manufacturing and Regional and Rural Development as the study progresses.

Make sure you're **subscribed** to keep across the latest developments.

[Support for Mount Isa and North West Queensland | Department of Natural Resources and Mines, Manufacturing and Regional and Rural Development](#)

[Mount Isa Transformation Study Mailing List](#)

## Regional Storytelling Showcasing the North West

MITEZ was proud to support **The Bank Manager**, a short film inspired by the infamous 1932 Cloncurry bank robbery and filmed at the spectacular Chinaman Creek Dam near Cloncurry.

Pictured during production are **MITEZ CEO Maria James** and former **MITEZ Management Committee Member and Richmond Shire Mayor John Wharton** on set with **Quamby Studios**.

Since its release, The Bank Manager has enjoyed a successful domestic and international festival run, winning awards and screening at major film festivals across Australia and overseas.

We are sharing this project once again as the film is now officially available to stream on YouTube, providing a fantastic opportunity for a wider audience to experience a story inspired by North West Queensland's history and landscapes.

Projects like this help showcase the unique character of our region, support the creative industries, and promote North West Queensland to audiences well beyond our borders.



TRENDING  
NOW

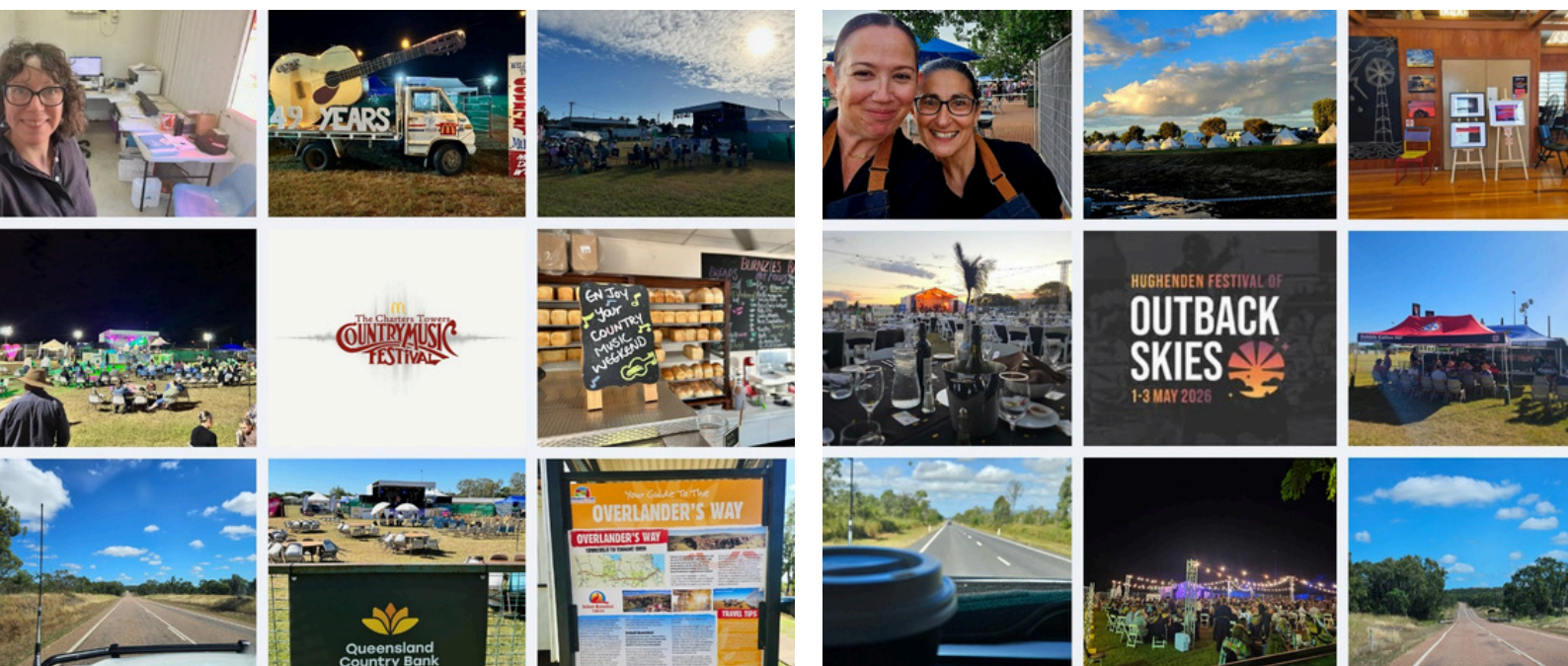


## Out and about across the MITEZ Corridor

May was a busy month across the MITEZ corridor, with the team out and about supporting regional events, engaging with stakeholders and continuing to strengthen relationships across North West Queensland.

The month kicked off over the May long weekend, with our **Overlanders Way** Lead **Emily Hall** volunteering at the **Charters Towers Country Music Festival**, supporting another flagship regional event that continues to attract visitors and showcase the strength and spirit of regional Queensland.

At the Festival of Outback Skies in Hughenden, **MITEZ CEO Maria James** and **Executive Officer Jennifer Vrana** also rolled up their sleeves to assist the catering team from Ochre Restaurant. It was a fantastic experience and a great reminder of the collaboration, professionalism and community spirit that underpin so many successful regional events.



The MITEZ team was also in Mount Isa for **Connect North West**, where MITEZ hosted a trade stall as part of the exhibition showcase. The event provided an excellent opportunity to connect directly with regional businesses, project proponents and industry representatives, while continuing conversations around growth, investment and the future of the North West.

The strong turnout and positive atmosphere reflected the momentum currently building across the region, particularly around critical minerals, infrastructure investment, renewable energy and regional development opportunities.





Photo credit: MITEZ & Connect North West

The MITEZ team also attended the **Critical Minerals Luncheon** as part of the **Connect North West** program, joining industry and government stakeholders to discuss the future of North West Queensland’s critical minerals sector and the opportunities emerging across the corridor. Guests heard from **Mayor Peta MacRae**, Mayor of Mount Isa and a member of the MITEZ Management Committee, whose keynote focused on the future of the North West, the importance of regional collaboration and maintaining strong industry and investor confidence.

Additional speakers included **William Dutton** from **ATC Insurance Solutions**, **Nicholas Huffles** from **Mount Isa Minerals**, **Brett Spitz** from **Banksia Minerals** and **Shane Kelly** from **Maven Libera**, who shared insights across mining rehabilitation, copper processing innovation, critical minerals exploration, investment pathways and emerging research opportunities for the region. The visit also provided valuable opportunities for informal networking and stakeholder engagement throughout the event program.



Later that evening, the team swapped business attire for a night under the stars at the iconic **Mount Isa Underground Hospital & Museum** for the **“Swing on a Star”** 1940s Swing-Era Gala. MITEZ was proud to sponsor the event in support of the volunteer committee and the important work being undertaken to preserve and celebrate the region’s unique history.

The evening was a strong reminder of the pride, resilience and community spirit that continues to define the North West.



Events such as **Connect North West** and the **Swing on a Star Gala** play an important role in strengthening regional relationships, supporting local economies and maintaining momentum across the MITEZ corridor as the region continues to grow and evolve.



## North West Queensland Economic Development Practitioner Group Forum

**MEO Emily Hall** attended the North West Queensland **Economic Development Practitioner Group (EDPG)** Forum in Mount Isa on 26–27 May. Hosted at Outback at Isa, the venue offered excellent facilities and access to the Visitor Information Centre’s displays, supported by welcoming and knowledgeable staff. The forum aimed to strengthen collaboration, build capability, and support regional growth.

Day one opened with updates from **Mount Isa CEO Tim Rose** and representatives from the **Department of State Development, Infrastructure and Planning (Paul Byrne, Suzanne Ford and Chris Gillies)**. This was followed by a strong focus on tourism and opportunities to grow the North West visitor economy through collaboration, clear priorities and practical action.

MITEZ presented on progress along the **Overlanders Way** since taking over the group late last year, highlighting a corridor-wide approach with an economic development lens. Additional insights were shared by **Neil O’Brien (Gulf Savannah Development)**, **Penny Jones (Department of Environment, Tourism, Science and Innovation)**, **Fiona Nicholl (Drive Queensland)**, and **Andy Jiang (Tourism and Events Queensland)**.

Discussion on the day highlighted cautious sentiment within the traveller economy due to fuel cost uncertainty, alongside opportunities driven by state initiatives such as Destination 2045, Brisbane 2032 and Drive Queensland. The region is well positioned to leverage these, particularly with the strong focus on drive tourism.

Pre-forum polling reinforced that transport and accessibility remain the primary enablers of regional tourism. An emerging trend well aligned to the Overlanders Way is dark skies tourism, which attracts visitors to remote areas through exceptional stargazing experiences with minimal light pollution.

The workshop on the day provided practical tools for tourism development and reinforced a shared commitment to ongoing regional collaboration and communication.

Day two featured a strengths-based leadership workshop facilitated by **Roderick Cross** from **START Consultants**. Roderick specialises in strategic planning and development, supporting regions and organisations to deliver sustainable economic, tourism and infrastructure outcomes. More information on START Consultants is available at: [Welcome to Start Consultants](#)



## AI for Climate: From Regulation to Resilience

MITEZ recently tuned into the AI for Climate: Physical Climate Risk – From Regulation to Resilience webinar, which explored how organisations are navigating the intersection of climate risk, regulation, and emerging AI capabilities.

With new climate disclosure and risk requirements now in place for large Commonwealth companies, the conversation has shifted from awareness to accountability. Boards are increasingly expected to demonstrate confidence in the data underpinning their decisions particularly where AI models are used. This includes the ability to clearly explain methodologies, assumptions, and outcomes to auditors.

A key theme was the growing role of AI in supporting infrastructure and asset management. AI can enhance decision-making by aggregating complex datasets, identifying risk patterns, and improving asset uptime. In areas such as maintenance planning and system resilience, these tools offer the potential to reduce downtime and optimise long-term costs especially in the face of climate disruptions.

The webinar reinforced the importance of nationally consistent, trusted data. Australia's first [National Climate Risk Assessment](#) provides a strong foundation, offering a comprehensive view of climate risks across systems and regions, and helping decision-makers prioritise adaptation actions. It highlights that climate impacts will affect infrastructure, services, communities and the economy in different ways, underscoring the need for coordinated, data-informed responses.

At the same time, AI remains a developing capability. While it enhances our ability to analyse and synthesise information, its outputs depend on the quality, transparency, and governance of underlying models and data. Organisations must balance innovation with assurance, particularly where decisions have long-term infrastructure and resilience implications.

This is a new operating environment, one that presents significant opportunities but also demands caution. Organisations are learning in real time how to balance innovation with accountability.

**For further insights and governance guidance, visit the Australian Climate Service:**

<https://www.acs.gov.au/>

**Discover more about the National Climate Risk Assessment here - [National Climate Risk Assessment](#) | [Australian Climate Service Website](#)**

**CSIRO Featured article - [Article: Why your climate risk assessments & asset decisions may be flawed](#)**

## Renewables, storage and energy price signals

Recent analysis from the **Australian Energy Market Operator (AEMO)** and the **Queensland Renewable Energy Council (QREC)** reinforces a consistent trend emerging across Queensland's energy system: increased renewable generation, supported by battery storage, is placing downward pressure on electricity prices. Queensland recorded the largest year-on-year reduction in wholesale prices in the National Electricity Market in the first quarter of 2026, reflecting both higher renewable output and improved dispatch during peak periods.

What is becoming clearer is that price outcomes are increasingly shaped not just by generation capacity, but by timely delivery, system integration and supporting infrastructure. The benefits of renewables are strongest where transmission, storage and approvals processes keep pace with project development.

For corridor regions like MITEZ, this highlights the growing importance of readiness and coordination alongside investment. As renewable and storage projects move from planning into delivery, the role of shared infrastructure and system alignment becomes central to sustaining affordability, reliability and long-term energy security.

**View the AEMO Report here - [qed-q1-2026.pdf](#)**



## RDA TNWQ committee strengthened

As activity across North and North West Queensland continues to intensify, strong regional leadership and collaboration remain critical to delivering long-term economic and community outcomes. Regional Development Australia Townsville and North West Queensland has welcomed four new members to its committee, bringing expertise across strategic communications, First Nations enterprise, telecommunications, and regional economic development.

The new appointments — **Heidi Turner, Kallum Cotterell, Neil O'Brien and Rachel Cliffe** — strengthen RDA TNWQ's capacity to connect government, industry and communities and support delivery of the 2026–2031 Strategic Regional Plan. The refresh reflects the skills needed as the region advances opportunities in critical minerals, energy, infrastructure, workforce development and investment attraction, while also acknowledging the valuable contribution of outgoing members **Noel Gertz** and **Ashley Gallagher**.

This leadership renewal highlights the growing importance of aligned regional governance across the corridor, ensuring communities are well positioned to respond to change, leverage major projects and build long-term economic resilience.

**For more information, visit [Our Committee - Regional Development Australia](#)**

## Jobs Townsville & North Queensland committee meeting

The **RDA JTNQ Committee** met in May, bringing together regional leaders to discuss workforce challenges, economic growth opportunities, and collaborative initiatives shaping North Queensland's future.

The meeting highlighted strong regional collaboration, but also reinforced the urgency of tackling workforce, infrastructure and skills challenges to support sustained economic growth.

A key focus was the **RDA State of the Region Roadshow**, highlighting critical links between workforce, infrastructure, housing and liveability. The initiative is engaging councils and stakeholders across the region to inform decision-making for the next decade.

The newly launched **RDA TNWQ Strategic Regional Plan 2026–2031** was also presented, outlining priorities to guide economic growth and investment.

Workforce pressures remain a priority. Discussions reinforced growing workforce demand driven by major projects and population growth. Key challenges include skills shortages, low workforce participation, migration constraints, and the need to better align training pathways with industry demand.

Early findings from a regional childcare and early education study in Hinchinbrook highlighted its critical role in enabling workforce participation. Challenges include ageing demographics, limited qualifications, a narrow youth pipeline, and workforce shortages. A regional working group will now progress solutions and further analysis.

There were a number of key issues raised by members:

- Barriers to workforce participation such as transport access, housing, and infrastructure constraints continue to impact the region.
- Declining international student numbers and visa challenges are affecting skills supply.
- Strong engagement in career pathway programs and growing enrolments in key study areas offer some positive signs for the future workforce pipeline.

Next steps focus on continuing regional collaboration through the **RDA State of the Region Roadshow**, progressing further workforce and training analysis, and advancing key initiatives such as the Hinchinbrook workforce solutions.

## **GHD - Accredited technical masterclass, future-ready data centres: designing and optimising for power, water and permitting**

The 60-minute session will provide a practical, multidisciplinary view of how to scale future-ready data centre development. Drawing on their global project experience, the industry specialists will examine how site selection, energy supply, cooling systems, water availability and regulatory frameworks interact to influence feasibility, cost and delivery risk.

**[Register now](#): Thursday, 18 June 2026 | 11:00 am AEST | 1:00 pm NZST**

Join **GHD** as they explore emerging trends in the data centre space, as the demand for data centres increases, and the implications for utilities, governments, developers and infrastructure partners. GHD presenters will examine how different parties are responding to constraints, and what this means for planning, approvals and long-term infrastructure strategies.

By attending this exclusive masterclass, you will be able to:

- Describe how to address the key drivers shaping data centre development, including the interdependencies between power, water, permitting, and site selection.
- Explain how constraints such as utility capacity, regulatory requirements, cooling strategies, and infrastructure availability influence project feasibility, timelines, and risk.
- Apply a high-level, integrated infrastructure lens to interpret how data centre developments evolve at scale and identify considerations relevant to their own context.

You can complete the short quiz at the end of the class to earn 0.1 Continuing Education Unit (CEU) from the [International Accreditors for Continuing Education and Training \(IACET\)](#). As an IACET Accredited Provider, GHD offers IACET CEUs for its learning events that comply with the ANSI/IACET Continuing Education and Training Standard.

If you're unable to attend the live event, registering via the link will also give you access to the recording to watch on-demand.

Please feel free to forward this invitation to your fellow colleagues who you think would be interested in attending.



## NAIF Locked in for the long term

The Australian Government has confirmed the **Northern Australia Infrastructure Facility (NAIF)** will continue operating through to 2036, providing long-term certainty for major infrastructure investment across northern Australia.

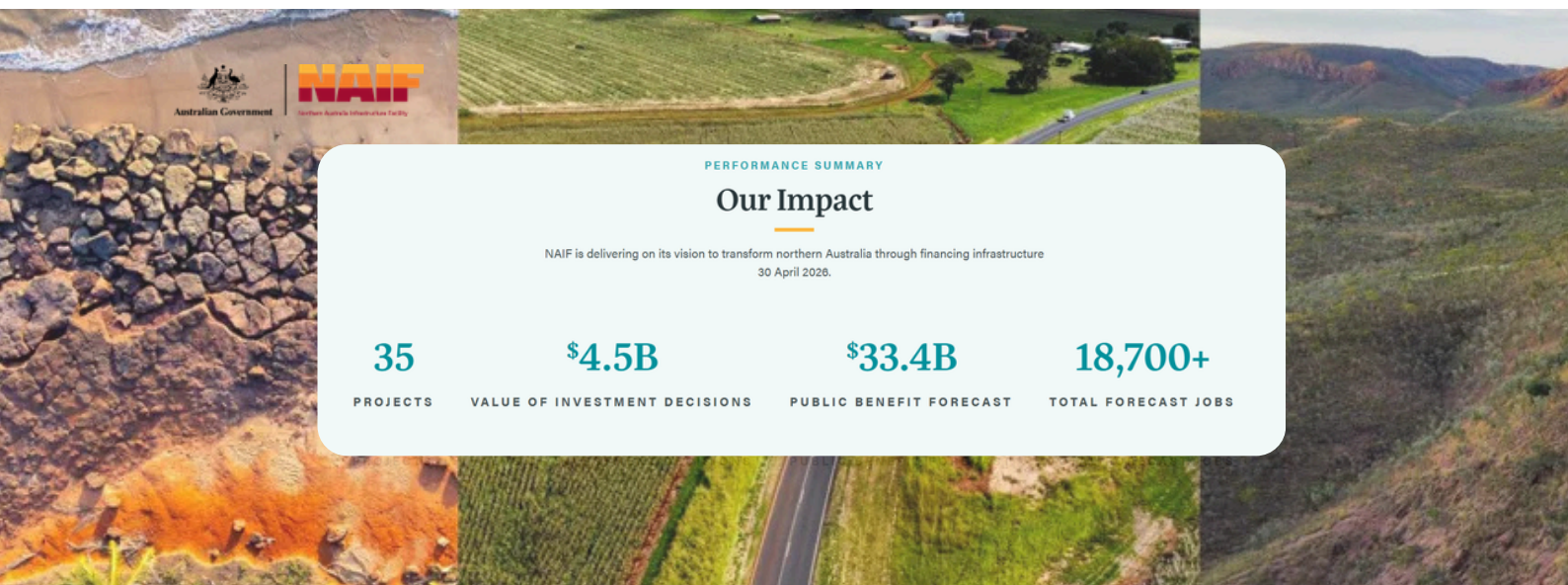
This commitment is reinforced by the appointment of **Neil MacDonald** as **NAIF's new Chief Executive Officer**, based in Cairns. Mr MacDonald brings strong experience in corporate finance and nationally significant infrastructure projects, alongside deep familiarity with government funding and accountability processes.

Over the past decade, NAIF has committed more than **\$4.45 billion** in concessional finance across Queensland, the Northern Territory and Western Australia – supporting transport, energy, housing and enabling infrastructure that underpins regional growth. With NAIF now extended for another 10 years, regions have greater confidence to plan, develop and mature projects that require patient capital and long lead times.

For the MITEZ corridor and North West Queensland, this long-term commitment strengthens the case for strategic, well-planned infrastructure that supports industry development, liveability and productivity across the region.

This long-term commitment to NAIF provides greater certainty for northern regions to plan and deliver infrastructure that supports sustained economic growth. With renewed leadership and funding secured through to 2036, there is a stronger pathway for well-designed, regionally significant projects to progress. For the MITEZ region, it reinforces the value of early planning, collaboration and building an investment-ready project pipeline aligned to long-term development goals.

For more information on NAIF – [The Northern Australia Infrastructure Facility \(NAIF\)](#)



## Townsville reaches a major milestone in advanced simulation and ai

Townsville has marked a major milestone in Australia's emerging technology landscape with the continued delivery of **NQ Spark**, a national advanced simulation, artificial intelligence and high-performance computing facility currently under construction and due for completion in September 2026.

Six years in the making, the project represents a **\$32 million investment** from the Australian Government, supported by Queensland Government funding, and reflects a growing commitment to building sovereign capability in advanced technologies. Speaking at the milestone event, Senator Nita Green acknowledged the long-term vision behind the project and its role in strengthening national capability across defence, industry and research.

NQ Spark is designed to provide safe, high-fidelity testing of complex and high-risk scenarios – capabilities that extend well beyond defence to support sectors such as resources, health, infrastructure and emergency management. As **James Cook University** Vice Chancellor Professor Simon Biggs highlighted, real-world testing often comes with constraints; advanced simulation allows innovation and decision-making to happen safely, efficiently and at scale.

The facility is being delivered through a partnership between **Townsville City Council** and James Cook University, with Council holding a 50% shareholding. **Mayor Nick Dametto** and key regional leaders, including **Janelle Poole**, and **Wayne Chiesa**, highlighted the importance of collaboration across local government, research institutions and industry.

*“This investment is about long-term growth for regional Australia,” **Senator Green said.** “It positions Townsville as a nationally significant centre of excellence in advanced simulation and emerging technologies.”*

With its proximity to defence assets, a world-class research base and a skilled workforce, Townsville has emerged as a natural home for the facility. Once operational, NQ Spark is expected to play a critical role in workforce development, applied research and innovation, strengthening the region's economic resilience while contributing to Australia's national technology capability.



The establishment of NQ Spark has implications well beyond Townsville. For industries across the MITEZ corridor, advanced simulation and high-performance computing capability can support safer testing of complex operations, improved decision-making, workforce training and innovation across sectors such as critical minerals, logistics, energy, health and infrastructure. By reducing reliance on costly real-world trials and enabling collaboration between industry, research and government, this national facility strengthens regional productivity and positions the corridor to compete in increasingly technology-driven markets—supporting long-term economic resilience and diversification across North Queensland.



Fly through here 

Watch the headliner video here 

Learn more about NQ Spark at [www.nqspark.org](http://www.nqspark.org)

## Water for growth: Securing the future of the MITEZ Corridor

Billions of litres of water, long-term regional growth, and a once-in-a-generation opportunity to get water planning right. What does it all mean for the MITEZ corridor? This in-depth feature brings together Sunwater, the Mount Isa Water Board and the Queensland Government to unpack the Gulf Water Plan review, emerging opportunities, and the challenges ahead. Read [Blog: Water for Growth: Securing the Future of the MITEZ Corridor | MITEZ](#) to understand how water could shape the future of the region.

## Water snapshot: What else is happening across the region?

Alongside the Gulf Water Plan review, several important water-related initiatives and investments are shaping the future of the MITEZ corridor:

- **High-level North West water infrastructure roundtable**

A Queensland Government-led roundtable was held in Mount Isa, bringing together councils, the Mount Isa Water Board and Sunwater to examine water pricing pressures, infrastructure needs and long-term supply challenges across the North West. The discussions reinforced the importance of coordinated approaches to water security and cost-of-living impacts for remote communities.

- **Richmond and Flinders regional water collaboration**

Richmond Shire Council and Flinders Shire Council participate in regional water and sewerage alliance arrangements under QWRAP, working with neighbouring councils on shared challenges such as workforce shortages, asset management and service efficiency. This collaboration highlights how smaller councils are strengthening service delivery through regional approaches.

[Richmond and Flinders Alliance](#)

- **Building our regions funding for water and sewerage projects**

Ongoing Building Our Regions funding is supporting multiple water, sewerage and treatment upgrades across North West councils. These investments are improving system reliability, addressing ageing infrastructure, and supporting industrial and community growth across the region. [\[sunwater.com.au\]](#)

- **North West Queensland Regional Water Alliance (QWRAP)**

Through QWRAP, eight councils across North West Queensland are collaborating on workforce capability, shared services, data systems and operational resilience in the water and sewerage sector. This alliance is strengthening long-term service delivery and regional capacity.

[\[qldwater.com.au\]](#)

MORE INFO



**sunwater**



Department of  
Local Government, Water and Volunteers



## Fishing, lifestyle and liveability along the MITEZ Corridor

Across the MITEZ corridor, fishing is a defining part of regional lifestyle, community identity and visitor experience. From inland dams and river systems to coastal and offshore waters at the eastern end of the corridor, fishing connects communities, supports tourism, and reinforces liveability from Mount Isa to Townsville.

Recreational and competitive fishing play a key role in how people experience the region as a place to live, work and visit. For inland communities, accessible freshwater fishing supports family-friendly lifestyles and community connection, while coastal events position Townsville as a gateway to world-class blue-water fishing that complements inland living across the corridor.

### Fishing Events Along the MITEZ Corridor

#### August – Townsville Billfish Challenge

The Townsville Billfish Challenge positions Townsville as a national game-fishing destination. High-value visitation, charter activity and extended stays reinforce Townsville's role as a coastal lifestyle hub that complements inland living along the corridor.

<https://www.tgfc.org>

#### September – Inland Barra Fishing Classic

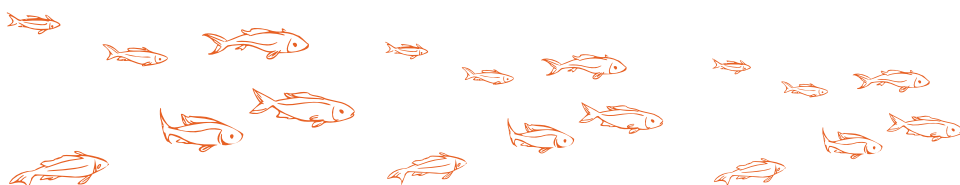
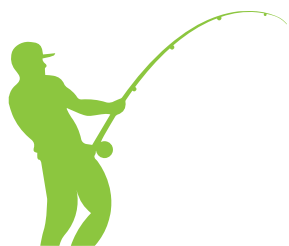
Hosted by the Charters Towers & Dalrymple Fish Restocking Group, this event is held at the Charters Towers Weir on the Burdekin River. It brings anglers together for a competitive fishing experience while highlighting inland fishing opportunities and the vibrant community spirit across the region. Big Barra, Big prizes, and even bigger fun!

[www.visitcharterstowers.com.au](http://www.visitcharterstowers.com.au)

#### October – Lake Moondarra Fishing Classic

Held just outside Mount Isa, the Lake Moondarra Fishing Classic is one of Queensland's premier freshwater fishing competitions. The event draws thousands of competitors and visitors, delivering strong economic and social benefits while showcasing Lake Moondarra as a year-round recreational asset.

[Outback at Isa](#)



## October – North West Fishing Classic

Running alongside Moondarra events, the North West Fishing Classic reinforces community-led stewardship of waterways and highlights the importance of local water assets in supporting liveability and outdoor recreation across the North West.

### Other spots to drop a line

#### Hughenden Recreational Lake

The Hughenden Recreational Lake Precinct is a popular fishing spot in North-West Queensland, featuring a well-placed jetty on the southern edge with nearby shelter and amenities. Stocked in 2020 with thousands of Sooty Grunter, Sleepy Cod, and Red Claw yabbies, the lake offers excellent opportunities to catch both native fish and freshwater crayfish.

#### A little local secret...

Kooroorinya Falls Nature Reserve, 54 km south of Prairie on the Prairie–Muttaborra Road, is a little-known gem located on private property, so visitors are encouraged to check with a local before going. After rain, Tower Creek forms a striking waterfall into a rocky gorge, while post-wet-season billabongs offer great spots for fishing, swimming, and relaxing. Rich in birdlife and wildlife, it's also a rewarding destination for nature photographers.

#### There are also events in MITEZ neighbouring regions:

April – Karumba Run-Off Fishing Tournament – Gulf of Carpentaria. Held at the end of the wet season, it attracts anglers and visitors from across the state and reinforces the Gulf's reputation for world-class fishing and outdoor lifestyle.

May – Hinchinbrook Catch & Release Tournament – Hinchinbrook. This event showcases how water-based recreation and environmental stewardship can coexist. The event highlights sustainable fishing practices while promoting the natural assets that support liveability across North Queensland.

<https://qgfa.com.au>

Fishing supports more than tourism. It underpins lifestyle choice. Whether through competitive events or informal weekend recreation, fishing contributes to community wellbeing, strengthens regional identity, and enhances the corridor's appeal for workforce attraction and retention.

*“Liveability is a critical part of regional competitiveness. From inland lakes to coastal waters, the way communities across the MITEZ corridor engage with water helps attract people, support wellbeing and strengthen the region's long-term future.”* – **Charles Buchanan, Chair, MITEZ**





SAVE  
-THE-  
DATE-

# What's on along the MITEZ CORRIDOR



## FREE Grassroots Volunteer Training and Appreciation Tour

WHEN: 5, 6 & 9 JUNE

**HUGHENDEN**

REGISTRATIONS ARE ESSENTIAL!

THIS IS NOT YOUR USUAL WORKSHOP...

BE PART OF SHAPING WHAT COMES NEXT

FOR VOLUNTEERING IN HUGHENDEN!

BACK TO BASICS WORKSHOPS:

5TH JUNE - 2 WORKSHOPS

3-5PM

GOODS GOVERNANCE, WHAT TO DO AFTER AN ACCIDENT

5.30-7.30PM

GRANT WRITING AND AI TOOLS.

6TH JUNE - 2 WORKSHOPS

8.30-10.30AM

WHERE IS YOUR ORGANISATION UP TO?

GRANT WRITING AND AI TOOLS.

9TH JUNE - 2 WORKSHOPS

8.30-10.30AM

WHERE IS YOUR ORGANISATION UP TO?

GRANT WRITING AND AI TOOLS.

VENUE- CUC BRODIE STREET (ABOVE THE LIBRARY)



## "CHRISTMAS IN JULY"

Time to get your best creation skills on Cloncurry!



### 2026 Our Region, Our Future Jobs Expo

Explore. Connect Grow. Launch Your Future.

This inclusive, community-led event connects people to real jobs, builds skills, and promotes local career pathways across all industries - right here in Mount Isa.

Tuesday 18<sup>th</sup> August 2026 9am-5pm | Buchanan Park Events Complex

## ROCKHANA

GEM, MINERAL AND MINING FIELD DAY

SAVE THE DATE

SATURDAY 4<sup>TH</sup> JULY 2026

THE CLONCURRY & DISTRICT HISTORICAL SOCIETY MARKETS SUNDAY 5<sup>TH</sup> JULY 2026

## MITEZ ECONOMIC DEVELOPMENT

### CALLING LOCAL ARTISANS, MAKERS & PRODUCERS!

BE PART OF THE MITEZ LONG LUNCH

We're inviting local businesses, producers, makers, artisans and community groups to be part of the Artisan Markets at the MITEZ Long Lunch.

Showcase your products, connect with regional leaders, industry and community, and celebrate the best our North West has to offer.

THURSDAY 16 JULY 2026

JULIA CREEK, QLD MITEZ LONG LUNCH

A CELEBRATION OF OUR REGION

STALL EOs NOW OPEN!

ARTISAN MARKETS FORMING PART OF THE GUEST ARRIVAL & NETWORKING EXPERIENCE

## ARE YOU STUDYING?

COUNTRY UNIVERSITIES CENTRE MOUNT ISA IS A FREE, SAFE, SECURE STUDY FACILITY FOR ANYONE STUDYING WITH ANY HIGHER EDUCATION INSTITUTION IN AUSTRALIA.

- Quiet place to study
- Free high speed internet
- Student access 6am to Midnight
- Free printing
- Dual screen computers
- Refreshments
- Local student community
- Face-to-face local support

REGISTER ONLINE

www.cucmountisa.edu.au



## THE PERCIVALS 2026

23 MAY - 30 AUGUST 2026  
PERC TUCKER REGIONAL GALLERY



### WHY GET INVOLVED?

- High profile event with strong industry, business & community attendance.
- Great opportunity to promote your business and products.
- Support local, strengthen our region.

### WE ARE SEEKING EOs ON:

- INTEREST IN PARTICIPATING: Let us know you're keen to be involved.
- PRODUCTS / SERVICES: What will you showcase or sell?
- SPACE REQUIREMENTS: Approximate space needed for your stall/display.
- LOGISTICAL CONSIDERATIONS: Power, access, equipment or other needs?

Interested? Message us or email [rdo@mitiez.com.au](mailto:rdo@mitiez.com.au) to express your interest. 0419 802 708

SHOWCASE YOUR TALENT. CONNECT. COLLABORATE. CELEBRATE OUR REGION.

Bringing degrees closer to regional, rural and remote Australia.

18 Miles Street, Ph: 0472 669 919

## THE BARNYARD BAND

## MOUNT ISA MINES RODEO

7-9 AUGUST 2026

Presented by AKUBRA

TICKETS ON SALE [mountisarodeo.com.au](http://mountisarodeo.com.au)

### Cuppa with the Councillors 8:30 am

18 February  
25 March  
29 April  
27 May  
24 June  
22 July  
26 August  
23 September  
25 November  
16 December

## IBA in Mt. Isa

Business workshops and one-on-one support

Designed for Aboriginal and Torres Strait Islander entrepreneurs who are starting a business or looking to take their next steps in their business journey, these workshops, facilitated by Brendan Bishop, will cover business fundamentals, as well as a range of current topics, including the broader economic environment, the Federal Budget, and how businesses can respond to changing economic conditions. You may attend either session, however, we encourage you to attend both to gain the full benefit of our content. Business registration can be provided.

Participants and community can also engage with IBA staff for one-on-one consultations to discuss their specific needs and receive tailored business support.

16 June: Daytime one-on-one support: 9am-4pm | Training workshop: 5pm-8pm  
17 June: Daytime one-on-one support: 9am-4pm | Training workshop: 5pm-8pm  
18 June: Daytime one-on-one support: 9am-4pm | Training workshop: 5pm-8pm

Key topics: Understanding your cash flow, key financial statements, using financial information to discuss their specific needs and receive tailored business support.

REGISTER NOW

Scan for 16 June

Scan for 17 June

## PETER GOSCH APPOINTMENT

### BEST DRESSED PREMISES

## 'LEGENDS OF MOUNT ISA RODEO'

OUR 2026 THEME DERIVES INSPIRATION FROM LEGENDARY COWBOYS, PEOPLE, LANDSCAPES, MOMENTS & ATMOSPHERE... EVEN INFAMOUS BULLS LIKE 'CHAINS AW' ALL DEFINE THE SPIRIT OF MOUNT ISA RODEO, LEGENDARY SINCE 1959.

REGISTRATIONS NOW OPEN!  
CLOSING JULY 10<sup>TH</sup>, 2026  
[www.commercenorthwest.com.au](http://www.commercenorthwest.com.au)

HIT 102.5

# VOLUNTEER

*for your community*

## BE PART OF THE MITEZ LONG LUNCH

We are looking for **10** local volunteers to help deliver an unforgettable day for **our guests**.



### HELP AS WAIT STAFF AND SERVICE STAFF

Assist with guest service, food and beverage support, table setup and general event support.



### SUPPORT A LOCAL CAUSE

Nominate a local charity, sporting club or community group to receive a **donation** on your behalf.



**THURSDAY**  
**16 JULY 2026**



**JULIA CREEK**  
**TURF CLUB**



**FROM 10:00AM**  
Full day commitment  
required



**MAKE A DIFFERENCE**  
Support our community  
and be part of something  
special



### INTERESTED?

Reach out to [rdo@mitez.com.au](mailto:rdo@mitez.com.au) to express your interest by Friday 3 July 2026.

*Together,*  
**WE SUPPORT OUR REGION**



Save The Date



# 2026 Event Calendar

Key dates for MITEZ engagement



## General Meeting Forum 2

Thursday 16 July

MITEZ's major event of the year, *The Long Lunch* will be held in Julia Creek with a Paddock to Plate theme, highlighting North West flood recovery and supporting local graziers while showcasing the strength & resilience of the region's agricultural sector.



## Roadshow 1

DATE TBC

LGA, regional members & other businesses  
Location: Charters Towers & Hughenden



## Roadshow 2

Tuesday 13 & Wednesday 14 October

LGA, regional members & other businesses  
Location: Mount Isa

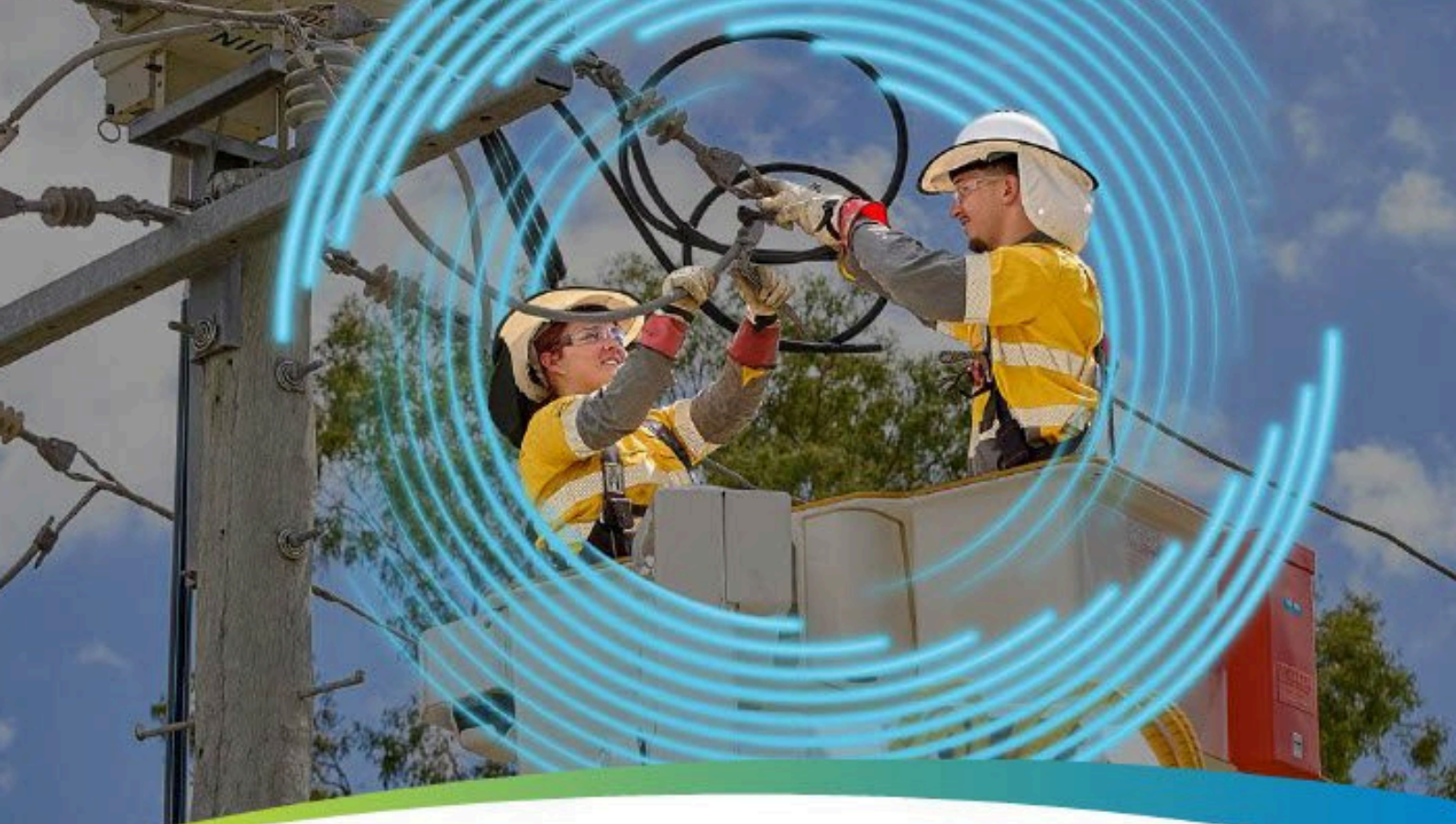
## Annual General Meeting & General Meeting Forum 3

Thursday 5 November

Review achievements and future plans  
Location: Townsville



Partner with MITEZ —  
sponsorship opportunities  
available across the NW corridor



# 2027 Apprenticeship Program at Ergon Energy Network and Energex

We are looking for the next generation of apprentices to help power Queensland.

We have a **variety of trade types** on offer through our apprenticeship program, including Electrician, Communications Technician, Distribution Linesperson, Transmission Linesperson, and Mechanical Trades.

If you would like to learn more about our apprenticeship program and hear from other apprentices and tradespersons, we're running an online information session. The session will cover:

- The benefits of working for us
- The different types of apprenticeships on offer
- The recruitment process and how to apply
- Your application and best practices
- The aptitude testing how to prepare yourself

## Online sessions coming up:

- Tuesday 2<sup>nd</sup> June, 4pm – 5pm
- Thursday 4<sup>th</sup> June 6:30pm – 7:30pm



**Register Here!**

To join the session, scan the QR Code & Register. Further info email [apprentices@energyq.com.au](mailto:apprentices@energyq.com.au)

A recording of the session is available on request

[ergon.com.au/apprenticeships](http://ergon.com.au/apprenticeships) | [energex.com.au/apprenticeships](http://energex.com.au/apprenticeships)



Part of Energy Queensland

## EXPERIENCED PEOPLE. STRONGER OUTCOMES.

We are seeking experienced resources for upcoming infrastructure and recovery projects across North and Central Queensland.

RRETS Group delivers practical, reliable and cost-effective infrastructure solutions across regional and remote Queensland.



### LOCAL KNOWLEDGE

Understanding what matters on the ground.



### PRACTICAL SOLUTIONS

Real world experience. Better outcomes.



### QUALITY DELIVERY

Standards driven. Results focused.



### SAFER COMMUNITIES

Delivering infrastructure that strengthens communities.

## EXPRESSION OF INTEREST – ROLE OPPORTUNITIES

### NORTH & CENTRAL QUEENSLAND INFRASTRUCTURE PROJECTS



#### CIVIL ENGINEERS

Design, delivery and management of civil infrastructure projects.



#### ROADS INSPECTORS

Site inspections, quality assurance and compliance monitoring.



#### PROJECT MANAGERS

Planning, coordination and delivery of major infrastructure projects.



#### PROJECT ENGINEERS

Technical support, reporting and project delivery across all phases.



#### CONTRACTS ADMINISTRATION

Contract management, administration and superintendent rep services.



### PREFERABLY ALREADY PRE-QUALIFIED WITH TMR

as an SEC01, CA01, CA02 or meet the requirements to apply.

SEC01

SEC02

CA01

CA02

OTHER CATEGORIES

TMR PREQUALIFIED PROJECT ENGINEERS / MANAGERS



### INTERESTED?

Send your CV and expression of interest to [enquiries@rrets.com.au](mailto:enquiries@rrets.com.au)



PROJECTS ACROSS NORTH & CENTRAL



EXPERIENCED AND SUPPORTIVE



SAFE, RELIABLE AND COMPLIANT



DELIVERING BETTER OUTCOMES

# Our Members

