

from the ceo's desk.....

What great news: Queensland appoints the State's first **Special Commissioner for Regional Rural Queensland** and the role will be based in Townsville, what an exceptional milestone this is for the North and North West. Not that **Commissioner Cripps** will only focus on the MITEZ corridor but given Townsville is the fourth largest urban centre (after Brisbane, Gold Coast, Sunshine Coast), and Bernard Salt has said **'No other region of comparable size has the connection into the future prosperity of the nation as Townsville'**, it's a perfect location for a regional official to be based.

Further, no-one could be more from the region, for the region, than Andrew Cripps. From the pretty wet place and home of the 7.9 metre golden gumboot, Andrew is a Tully boy and although he could have made it big in Rugby League just as the likes of Cowboys Aaron Ketchell, Craig Teitzel and Jake Clifford (I have the proof: a photo of the Tully Under 16 1997 Premiers, Andrew a good 20cm taller than the rest), this Tully lad chose to serve Queensland through politics where perhaps the experience from his youth of being a front-rower and first line of defence put him in good stead to make critical decisions in high-pressure situations.

The **Crisafulli Government** wants this role to focus on ensuring government policies, programs and services better reflect the needs, priorities and aspirations of regional and rural Queenslanders. Core to the role is to engage with communities across Queensland to identify barriers, unlock opportunities and drive better outcomes in regional and rural areas. The Commissioner is expected to link communities and government, ensuring local insights shape policies, programs and investment that support delivery of government priorities.



Andrew Cripps is the perfect person for the role. He has lived and worked in regional and rural Queensland all his life. He understands the people, communities, industries and the opportunities and wealth the regions bring to the State. As a former Queensland Minister for Natural Resources and Mines, and a rural Deputy Mayor, he has the expertise, experience and drive to be on-the-ground across the state, listening and helping deliver what's needed for Queenslanders, because we all deserve timely, effective and accessible government services no matter where we live in the State.

Understanding the nuances of the MITEZ region, the corridor from Mount Isa to Townsville, the size of New Zealand, is a great place for the Commissioner to start his tenure. Represented by the seven local government areas of **Mount Isa, Cloncurry, McKinlay, Richmond, Flinders, Charters Towers** and **Townsville**, together with multinational resource companies, national logistic and energy providers and emerging regional proponents, the MITEZ corridor mines, processes, grows and exports commodities that the world depends on.

Welcome to the role Commissioner Cripps, from a Tully girl, who looks forward to working with you to get some long awaited results for our region.



Photo credit: QREC and MITEZ

I recently attended the **Queensland Renewable Energy Council (QREC)** Parliamentary Friends of Renewables event, which brought together industry and government from across the political spectrum for open and practical discussion on Queensland's renewable energy transition. With more than 140 attendees and 20 MPs in the room, the strong turnout highlighted the shared focus on delivering economic prosperity through energy abundance for the Sunshine State. The participation of **Treasurer The Hon. David Janetzki MP** as guest speaker reinforced the importance of senior government engagement on energy and investment, with joint hosts **Adam Baillie MP** and **Lance McCallum MP** supporting constructive, cross-party dialogue.

Thank you to our event partner Alinta Energy and industry sponsor Windlab for their support – it was great to see **MITEZ member Windlab** playing a key role in supporting the event – and to all MPs and industry representatives who joined us.

Join now for 2026/2027



get the rest of 2025/2026 FREE

MITEZ is the peak regional development body for the North West economic corridor, connecting mining, agriculture, energy, tourism and defence industries to domestic and global markets. If you're planning to join in 2026/2027, now is the ideal time.

New members who sign up for 2026/2027 will receive the remainder of the 2025/2026 membership period at no additional cost, giving immediate access to MITEZ advocacy, networks and influence.

Why Join MITEZ?

MITEZ brings together local governments, major and emerging resource companies, energy providers, logistics operators and service organisations to drive sustainable economic growth across the corridor.

**MEMBERS
BENEFIT
FROM:**

High-profile advocacy at State and Federal Government levels

Direct engagement with decision-makers and regional stakeholders

Opportunities to shape policy and projects through roundtables and working groups

Collaboration to leverage funding and investment opportunities

Access to forums, workshops, networking events and shared resources

Together, members strengthen infrastructure, liveability, supply chains and long-term regional prosperity.

MITEZ advocacy and initiatives align with key regional priorities, including:

- Transport and logistics infrastructure
- Critical and strategic minerals
- Renewable energy and manufacturing
- Water security and agricultural diversification
- Defence, tourism and community liveability

**JOIN
NOW.
BENEFIT
SOONER.**

We are happy to have a chat or send through more information – ceo@mitez.com.au

MITEZ
ECONOMIC DEVELOPMENT



Be part of the voice of the North West Corridor

We're HIRING!

MITEZ
ECONOMIC DEVELOPMENT



Location: Townsville
(with occasional regional travel)

Employment: Casual
Award: Clerks – Private Sector Award 2020
(Level 3, Casual)
\$37.17 per hour

Casual Events, Media & Communications Support Officer

About the Role

You will support a small, high-performing team across events, communications and general coordination tasks.

Support events, communications and admin across the MITEZ team:

- Event planning and delivery
- On-the-day event support (some travel)
- Social media and newsletter content
- Media and communications materials
- General admin and coordination

What We Offer

Flexible hours • Real event experience • Varied role • Build your skills

About You

You are organised, proactive and comfortable working independently in a flexible casual role.

Please submit your resume and a brief cover letter addressing the selection criteria
Jennifer Vrana - Executive Officer
eo@mitez.com.au

Apply now

Queensland Country Bank proudly supports MITEZ

Queensland Country Bank's story is deeply rooted in regional Queensland, and this historic connection continues to shape who we are today. Our journey began in 1971, in Mount Isa, when we were known as the Isa Mine Employees' Credit Union Limited. At the time, Mount Isa was growing rapidly, and local workers needed access to simple, reliable banking and small lending options. From those beginnings, we've grown into a member-owned bank supporting more than 100,000 Members across Queensland and beyond.

Today, our connection to the Mount Isa and Townsville Economic Development Zone (MITEZ) is reflected in our strong presence across the region. We proudly operate branches in Mount Isa, Charters Towers, and Townsville, where many of our team members live, work, and support local businesses and industries. This footprint allows us to stay closely connected to the communities that drive economic growth across the North and North-West.

Our commitment to regional Queensland also extends to ensuring people have access to the in-person banking services they rely on. As a proud supporter of the Regional Banking Investment Alliance, we advocate for the importance of maintaining branch banking in regional areas. We believe that face-to-face service remains essential for many Queenslanders, and we are committed to keeping branches open and accessible so communities across the North and North-West can continue to bank with confidence.

While our name has changed and our network has expanded, our purpose remains the same: to help all Queenslanders live better lives through better financial wellbeing. As a member-owned organisation, we reinvest our profits into strengthening our business for the long-term benefit of Members, while also supporting the communities we serve.

From our origins in the North-West to our strong base in Townsville and our presence across the MITEZ region, Queensland Country Bank continues to grow with the same country spirit that started it all.



What we offer

With 29 branches across Queensland, including Mount Isa, Charters Towers, Aitkenvale, and Townsville City, we bring banking closer to home. Whether you prefer digital tools or face-to-face service, we provide a wide range of options tailored for every stage of life and business, such as:

- Home loans
- Investment lending
- Savings and transaction accounts
- Term Deposits
- Business and agri-business banking
- Personal loans
- Insurance, through our partners at CGU Insurance and Queensland Country Health Fund

Discover the Queensland Country Bank difference by visiting queenslandcountry.bank, dropping into your nearest branch, or calling our Contact Centre on **1800 075 078**.



Terms, conditions, fees and charges apply to products. Normal lending criteria applies to loans and credit cards. Consider the relevant PDS and TMD available at queenslandcountry.bank to see if the product is right for you. Queensland Country Bank Limited ABN 77 087 651 027
AFSL/Australian Credit Licence 244 533



**Queensland
Country
Bank**

Critical Minerals Momentum

Momentum is building across the global critical minerals sector, reinforcing North Queensland's role in the emerging mine-to-battery value chain.

The EU–Australia trade deal signals a shift away from cost-driven supply chains toward partnerships built on security, reliability and long-term value – particularly for materials critical to energy storage and decarbonisation.

As demand accelerates, the focus is no longer just on extraction. It is increasingly on integrated, end-to-end systems – linking resource, processing and application – that support long-duration energy storage and future energy infrastructure.

Against this backdrop, projects along the MITEZ corridor are well positioned to enable this transition.

Richmond Vanadium Technology (RVT) continues to advance the Richmond–Julia Creek project in North Queensland, a world-scale vanadium resource aligned with mine-to-battery systems and long-duration energy storage solutions. Its location within a strategically connected corridor highlights the importance of coordinated infrastructure, investment and supply chain development from inland resource regions through to export and energy markets.



Connecting critical minerals to long-duration energy storage.

Image ref: Grid-scale energy storage infrastructure. Sources: RVT Drilling program (RVT); Vanadium flotation / thickener cells (AusIMM); RKP / CTG Jimusaer ESS: the world's first gigawatt-hour-scale vanadium flow battery (RKP).

As global partners seek secure, transparent and integrated supply chains, North Queensland's critical minerals sector – supported by projects like RVT – is increasingly central to Australia's economic and energy future.

RVT Executive Chairman, **Brendon Grylls** said:

“In North Queensland, the future of critical minerals is about building trusted, end-to-end supply chains that deliver long-term value for regional communities. The Richmond–Julia Creek vanadium project is a key part of this, supplying material essential for long-duration energy storage and future energy infrastructure”



[Richmond Vanadium Technology - Home](#)

Connect with RVT on LinkedIn: [Richmond Vanadium Technology: Overview | LinkedIn](#)

Read more on the **EU–Australia trade deal** and its implications for critical minerals:

[EU–Australia Trade Deal Signals New Era for Critical Minerals Security](#)

Coogee Chemicals - Supporting Water Security Through Manufacture and Supply of Critical Water Treatment Products

Reliable water treatment depends on more than infrastructure – it depends on access to the right chemicals, at the right time, and in the right locations. MITEZ member Coogee Chemicals is a key contributor to water security across regional and remote Australia, supplying essential chemicals that enable safe, compliant and consistent water treatment.

Coogee Chemicals manufactures a range of products critical to treating drinking water, wastewater, industrial water systems, recreational and sporting facilities, supporting councils, utilities and industry to meet health, environmental and regulatory requirements. For regional communities, where logistics and distance can create vulnerabilities, dependable supply chains are vital to keep water systems operating without disruption.

An Australian owned company, through its Queensland manufacturing facilities, storage assets, and transport capabilities, Coogee Chemicals helps ensure water treatment facilities can rely on continuity of supply, even in challenging or high-demand conditions. This reliability underpins everything from public health outcomes to industrial productivity and community liveability. Coogee maintains a robust transport fleet and a network of strategically located regional depots with significant storage capacity, expressly designed to support local communities through reliable operations and long-term capability development.

These assets extend beyond water and wastewater treatment to include fuel terminals in Western Australia and other critical chemical storage facilities along the East Coast. Coogee's approach to growth and knowledge development is guided by the alignment of investment opportunities and like-minded partners, ensuring expansion delivers tangible benefits to the regions in which it operates.

The company continually assesses opportunities to form partnerships and extend these operations where a clear local or regional need is identified, strengthening security of supply in the event of natural disasters, rail disruptions, or other infrastructure constraints. Coogee's operational footprint spans from Cairns, Mount Isa and Townsville in the north, continuing down the East Coast to Newcastle, NSW, enabling responsive, community-focused support across a broad geographic area.

As water demand grows across the MITEZ corridor whether by population growth, resource development or climate pressures – the role of trusted, scalable manufacturing and supply will remain critical to delivering safe, treated and secure water for communities and industry. Coogee stands by their promise “We make, we store, we deliver”.

[A Diversified Chemical Manufacturing Company | Coogee](#)

Gawara Baya Wind Farm Moves Closer to Construction

Windlab's proposed **Gawara Baya Wind Farm** continues to progress, with the project moving toward financial close, bringing the start of construction firmly into view. Once underway, the project is expected to generate around 300 jobs at peak during construction, with additional long-term roles supporting operations and maintenance over the project's 30-plus-year lifespan.

Planning for construction is well advanced, with several early works contractors now engaged. Davbridge Constructions and Cooper McCullough Group have been awarded off-site road works and bridge construction, while Australian Portable Camps and Australian Camp Services will deliver and operate the temporary workforce accommodation camp. Windlab is actively facilitating introductions between contractors, councils, local businesses and the **Gugu Badhun Aboriginal Corporation (GBAC)** to support local employment, procurement and subcontracting opportunities.

The project is expected to deliver more than \$200 million in regional economic activity and will provide a \$200,000 annual Community Benefit Fund, supporting local priorities across the Hinchinbrook Shire and Charters Towers regions. Windlab also continues to strengthen relationships with the Gugu Badhun Traditional Owners, ensuring cultural values, employment opportunities and commitments under the Indigenous Land Use and Cultural Heritage Management agreements are embedded as the project progresses.

As preparations continue, Windlab has reaffirmed its commitment to transparent communication, responsible construction practices, and ongoing engagement with local communities, with further updates and community information sessions planned in the coming months.

Follow along and sign up for updates here - [Home](#)

For more information: Project website: gawarabaya.com | **Email:** gawarabaya@windlab.com |

Telephone: 1800 676 864



Supporting Stronger Communities: selectability

While the MITEZ zone is widely recognised for its role in minerals, ports and logistics, the long-term resilience of the corridor also depends on strong social infrastructure, particularly health, aged care and workforce development services.

Through an integrated model that combines training, mental health services, NDIS supports and aged care delivery, selectability is helping to build local capability, support vulnerable populations and develop a skilled regional workforce that can sustain communities along the corridor.

A Regional Provider with Deep Local Reach

With more than 30 years of service delivery across regional Queensland, selectability supports thousands of individuals annually through NDIS, Queensland Health and Commonwealth-funded programs.

By delivering services locally rather than relying on fly-in, fly-out models selectability contributes to community stability and continuity of care, particularly for people with complex mental health and support needs.

A key pillar of selectability's impact is selectability Training, a Registered Training Organisation (RTO 0281) based in Townsville. The RTO specialises in qualifications aligned with regional workforce demand, including community services, mental health, disability support and individual care.

Courses such as the Certificate III in Individual Support, Certificate IV in Mental Health and Diplomas of Community Services and Mental Health are designed to be accessible to regional learners through flexible delivery models, including supported online study.

Importantly, selectability Training is directly connected to service delivery, meaning training is informed by real-world regional practice and evolving workforce needs across health, disability and aged care sectors.

Expanding Aged Care and Health Services in Regional Communities

In addition to mental health and disability supports, selectability has expanded its service offering to include aged care. As Australia's population ages, the demand for aged care workers and services is increasing.

By combining aged care service delivery with targeted workforce training, selectability helps address both sides of the challenge: supporting older residents to age in place while creating employment pathways for local people.



Health, aged care and training providers like Selectability are essential partners in ensuring that economic development is matched by social capacity and community wellbeing.

By investing in people through training, care and support, Selectability contributes to a more inclusive and resilient MITEZ corridor. Strong regions are built not only on infrastructure and industry, but on the health, skills and stability of the communities that call the corridor home.

More on Selectability Training : [Selectability Training | Selectability](#)

More on Selectability located along the corridor:

- **Townsville** – Corporate & service anchor – [NDIS Townsville Services | Selectability](#)
- **Charters Towers** – Central regional hub – [Charters Towers mental health and suicide prevention support | selectability](#)
- **Richmond** – Rural service access point – [Richmond | Selectability](#)
- **Mount Isa** – Western regional hub – [Mount Isa | Selectability](#)

selectability

mental wellbeing and suicide prevention



Find a community near YOU!

Each program has a clear focus, but all share our commitment to improving mental wellbeing and building stronger communities.

EGRU – 2026 Training & Events

JCU's Economic Geology Research Centre (EGRU) is well underway for its 2026 schedule, offering a strong lineup of professional development opportunities and industry engagement events. The program includes a mix of online, on-campus and field-based short courses covering ore textures, QGIS, structural targeting, exploration geochemistry, field training and exploration geophysics.

The EGRU short course program for professional geoscientists is coming up in May and June and details, including registration can be found on the EGRU website here - [Exploration Geophysics for Geologists](#)

Exploration Geophysics for Geologists

Module 1: 26-28 May

Module 2: 2-4 June

Module 3: 9-12 June

3 x stand alone modules

Each module is presented over 3 or 4 consecutive days

Course Leader:

Module 1 James Daniell

Module 2 Kim Cook

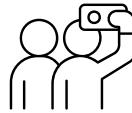
Module 3 Kate Hine



Photo credit: EGRU Website



ABARES Insights: Snapshot of Australian Agriculture 2026



Department of Agriculture, Fisheries and Forestry released their Insights report in February 2026. Australian agriculture remains a cornerstone of the national economy, managing the majority of the country's land and water resources while continuing to expand its global reach. According to the Australian Bureau of Agricultural and Resource Economics and Sciences (ABARES), agriculture, fisheries and forestry account for 57% of Australia's land use, 68% of water consumption, and more than \$80 billion in exports, representing 12.4% of total goods and services exports in 2024-25. After record-breaking production between 2020-21 and 2022-23, the sector experienced a downturn in 2023-24 due to drier seasonal conditions and lower prices. This was followed by a strong rebound in 2024-25, driven by higher livestock prices and improved crop output. In real terms, the gross value of agricultural, fisheries and forestry production has increased 45% over the past two decades, reaching \$100.3 billion in 2024-25.

Australia's agricultural sector is highly export-oriented, with around 71% of production exported by volume. Grains, oilseeds and pulses have been the fastest-growing export categories, while China remains the largest single export destination. However, this export success is increasingly shaped by non-tariff measures, which ABARES estimates are equivalent to a 19% tariff, costing agricultural exporters more than \$4 billion annually.

Improve Your Gateway by ICN Profile and Be Ready for Major Projects

Regional manufacturers are invited to take part in a **Supplier Readiness and Gateway by ICN – Profile Improvement Workshop**, delivered by **Queensland Manufacturing Hubs** and **ICN Queensland**.

This interactive session is designed to help manufacturers clearly present their capability, capacity and expertise on Gateway by ICN, improving visibility for major project supply opportunities across Queensland and nationally.

Participants will gain practical guidance on how to strengthen their Gateway profiles, understand ICN procurement phases, and position their business to be EOI-ready and aligned with selection criteria.

You'll learn:

- How to create an effective Gateway by ICN company profile
- How to position your business for major project opportunities
- How ICN procurement phases work, including EOIs and selection criteria
- Tips for navigating work packages and improving business visibility
- What support is available to help you win work

What you'll need:

- A laptop or mobile device with access to Gateway by ICN
- An active Gateway by ICN company profile
- Authorisation to edit your company profile
- [\(If you don't already have a profile, we encourage you to sign up for free here\)](#)

Event details:

Date: Wednesday 10 June 2026

Time: Registration from 8:00am | Workshop 8:30am–12:00pm

Location: Co Habitat, Level 1, 33–35 Palmer Street, Townsville
(Entrance via Plume Street)

👉 **Click below to find out more and register**

[Queensland Government Supplier Readiness and Profile Improvement Workshop Tickets.](#)



Biosecurity continues to be both a strength and a challenge. Australia's freedom from major livestock diseases underpins market access, but emerging threats such as the spread of Varroa mite across eastern Australia are creating new pressures on productivity and costs, particularly for horticulture and beekeeping.

Farm incomes vary widely across industries. Over the three years to 2024–25, cropping and dairy farms outperformed long-term income averages, while sheep and beef producers faced ongoing pressure from seasonal variability and price declines. Climate change has already reduced average broadacre farm profitability by an estimated 18% since 2001, highlighting the growing importance of adaptation strategies.

ABARES Insights

ISSUE 1 | FEBRUARY 2026



Snapshot of Australian Agriculture 2026

Australian Bureau of Agricultural and Resource Economics and Sciences

This Insights report describes the current state of Australian agriculture, with the aim of providing key information and statistics in one place. It covers key aspects of Australian agriculture: its role in the broader economy, trends in production, exports, the impact of non-tariff measures, biosecurity, agricultural employment, farm incomes, industry structure, climate variability impacts, productivity, the use of natural resource management practices and sequestration on agricultural land.



Productivity growth remains a key long-term strength. Cropping productivity has averaged 1.6% per year, well above livestock industries, supported by farm consolidation, technology adoption and improved management. Investment in research and development continues to deliver high returns, with ABARES estimating \$8 in benefits for every \$1 invested.

As Australia moves toward net zero, land-based sequestration is expected to play a significant role, offering new income streams for farmers while reshaping land use in coming decades.

Download the report from the website: [Snapshot of Australian Agriculture 2026 - DAFF](#)



Big Vein South Gold Project fast-tracked as Queensland gets “Back in Business”

Queensland’s resource sector and QGold (part of Strategic Minerals) received a major boost in April with the Big Vein South (BVS) Gold Project officially declared a Prescribed Project, signalling strong government support for projects that deliver regional jobs and economic growth.

Announced by Deputy Premier and Minister for State Development, Infrastructure and Planning, Jarrod Bleijie, the declaration places the \$400 million BVS Project among a select group of developments able to progress through a streamlined approvals process, reinforcing the State Government’s message that Queensland is “back in business” for responsible investment.

Located approximately 120 kilometres north of Richmond in north-west Queensland, the Big Vein South Gold Project is a new open-cut gold mine that builds on more than 30 years of exploration, culminating in the discovery of a world-class gold deposit. Once operational, the project is expected to process around 1.95 million tonnes of ore per year, producing approximately 100,000 ounces of gold doré annually, with production targeted to commence in 2028.

The project represents a significant opportunity for the MITEZ corridor, with estimates of 980 construction jobs and 380 ongoing operational roles, alongside substantial procurement and supply-chain opportunities across the region. Royalty payments to the Queensland Government are forecast to total approximately \$150 million over the life of the project.

With mining leases already granted, the project will now focus on securing final environmental approvals, including a site-specific environmental authority and Commonwealth EPBC approvals by late 2026, as it advances toward development.

For more on QGold and the project: [QGold](#) | [QCoal Group](#)



Photo credit: Strategic Minerals

Queensland Biofuels Feedstock Expansion Study – Update

The Queensland Government is progressing the Queensland **Biofuels Feedstock Expansion Study**, led by **Deloitte**, in partnership with **CSIRO** and the **Rural Economies Centre of Excellence**, on behalf of the Department of State Development, Infrastructure and Planning.

The study is identifying the most viable biofuels feedstock expansion opportunities across Queensland's regions, along with the critical pathways required to deliver them. The findings will provide an important evidence base to inform future investment and policy decisions.

MITEZ was pleased to participate in the study, contributing regional perspectives and insights through the stakeholder workshop process. Hearing directly from organisations across the state, including industry, councils and regional development bodies, was a key part of testing assumptions and strengthening the regional analysis.

The study is expected to be completed shortly, and a further update will be shared once final outcomes are available.

For more information on the Study and the Queensland Government commitment to the biofuels industry click here - [Biofuels | State Development, Infrastructure and Planning](#)

Regional Development Australia (RDA) Queensland, in partnership with **Ergon Energy Network** and **Energex**, is calling on businesses across the state to take part in the [Your Business, Your Energy Survey](#).

Why it matters:

Your input will help energy providers better understand:

- What businesses need to stay productive, resilient and grow
- The real impact of outages and supply issues
- How to better support you with costs and tariffs
- Your readiness for solar, batteries, EVs and emerging tech.



Shape Queensland's energy future

Now's your chance to influence what comes next

- ✓ Takes just 10 minutes
- ✓ Open to all industries, sizes and locations
- ✓ Helps shape future energy planning for Queensland businesses

This is more than a survey – it's your opportunity to make sure business voices are heard and reflected in Queensland's energy future.



Part of Energy Queensland



Have your say by 5pm, Friday 15 May 2026
Your business. Your voice. Your energy future.





TOURISM GROUP UPDATE

We're pleased to share a further update on the Overlanders Way Tourism Group, as the transition under MITEZ continues to take shape and momentum builds across the corridor.

Following the dissolution of the previous incorporated tourism group, the Overlanders Way Tourism Group now sits within MITEZ. With a footprint spanning seven local government areas in Queensland and through to the Barkley Shire in Northern Territory. Along with a diverse mix of industries and communities, MITEZ provides a practical and strategic home for a touring route that connects far more than tourism alone.

Tourism plays a key role in the regional economy and intersects strongly with MITEZ priorities, including freight and road infrastructure, workforce attraction and mobility, business capability, and community liveability. MITEZ will support and promote the route as a broader regional asset, one that contributes to jobs, investment and stronger communities across the north and west.

Recent progress includes:

- A dedicated contact point: exploreoverlandersway@mitez.com.au
- A refreshed logo now rolling out across digital platforms and signage
- A new Overlanders Way landing page on the MITEZ website, featuring town-by-town highlights, trip-planning links, visitor information centre contacts and acknowledgement of Traditional Custodians - [THE OVERLANDERS WAY | Mitez](#)
- Facebook and Instagram relaunched, sharing regular content across Place, People and Pathways from local stories and landscapes to travel tips and events



- Development of regular EDMs to keep members, partners and travellers informed and connected – email exploreoverlandersway@mitez.com.au if you would like to be added to the distribution database.

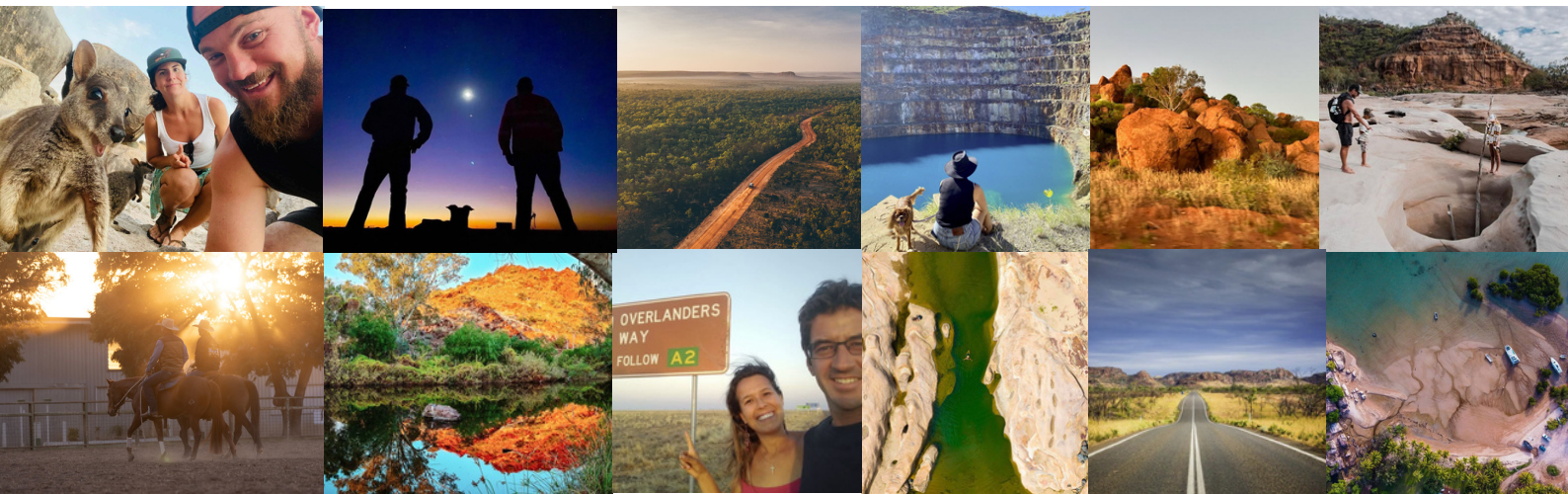


**HAVE A STORY TO SHARE?
GET IN TOUCH**

As Overlanders Way continues to build momentum, we're inviting LGAs, businesses, operators and community members to contribute content that helps bring the route to life.

Our social and digital content is guided by three themes, and we welcome ideas, images and stories across all of them:

Place – Showcase towns, landscapes and experiences along the route including hidden gems, attractions, food and hospitality, heritage, culture, seasonal scenery and unique local highlights.



People – Help us tell the stories of the people behind the places – local legends, operators, First Nations stories (with permission), visitor experiences, small businesses, event organisers and community champions.

Pathways – Support travellers on the journey with travel tips, itineraries, events, seasonal advice, themed road trips and practical information about experiencing Overlanders Way.

Get in touch via exploreoverlandersway@mitez.com.au.



Step Back Millions of Years This Dinosaur Week

Queensland's Dinosaur Week roars into life from Monday 4 to Sunday 10 May, and communities along the MITEZ corridor are right at the heart of the action.

Timed to coincide with National Dinosaur Day on Thursday 7 May, Queensland Dinosaur Week is a statewide celebration of prehistoric discovery bringing together fossil-rich Outback communities, world-class collections and unforgettable experiences. The week showcases Outback Queensland as Australia's leading destination for dinosaur and palaeo tourism.

From hands-on creativity to family-friendly adventures, Dinosaur Week offers a rare chance to connect with the stories buried beneath our feet

View the full statewide program: [Queensland Dinosaur Week 2026 – Dinosaurs Experiences Australia](#)

Dinosaur Week Highlights Along the Overlanders Way

Palaeo Illustration Workshops with Zev

4 & 6 May | Richmond

Get creative at Kronosaurus Korner with renowned palaeo illustrator Zev Landes. Discover how fossil finds are transformed into vivid prehistoric artwork in these hands-on workshops – perfect for artists, curious minds and dinosaur lovers of all ages.

[Kronosaurus Korner – Richmond Palaeo Illustration Workshops with Zev Landes – Dinosaurs Experiences Australia](#)

ROARsome Dino Scavenger Hunt

4–10 May | Hughenden

Perfect for families, the ROARsome Dino Scavenger Hunt at Flinders Discovery Centre invites participants to follow clues, uncover fossil facts and explore exhibits, with a dino-mite prize awaiting at the finish line.

[Kronosaurus Korner – Richmond Digging at Dawn with Trav Fossils – Dinosaurs Experiences Australia](#)



Want to discover more along the Overlanders Way on the MITEZ corridor if you are unable to make it for Dinosaur Week? [Drive-Itinerary-Overlanders-Way.pdf](#) - The Overlanders Way links Townsville to Mount Isa, tracing landscapes shaped by ancient inland seas, prehistoric giants and geological forces millions of years in the making. Here, reef ecosystems echo vanished oceans, dinosaur floodplains stretch to the horizon, and marine reptiles once ruled warm inland waters. It's where reef meets red dirt – and deep time reveals itself at every stop.

These events form part of a much larger statewide celebration, linking local discovery with Queensland's broader dinosaur story and inviting travellers to explore more of the Outback's ancient past.

Whether you're a dinosaur devotee or simply looking for an unforgettable Outback experience, visitors can explore places where ancient landscapes and living science meet alongside adventure and stories millions of years in the making.

Photo credit: Australian Age of Dinosaurs, Flinders Shire Council and Richmond Shire Council.

Unearth the past
Dinosaur Week awaits



Fuel Costs Put Queensland Tourism at a Turning Point

Earlier this month, MITEZ attended an online briefing hosted by the Queensland Tourism Industry Council (QTIC) CEO Natassia Wheeler: Fuel Crisis Briefing with Senator the Hon Nita Green. The event brought industry together to discuss the growing impact of fuel price volatility on Queensland's visitor economy.

The session highlighted that while visitation remains strong in many parts of the state, rising fuel, energy and operating costs are eroding profitability, particularly for regional and remote tourism operators that rely on long-haul travel, aviation and transport-based experiences, including drive tourism. Through their own research and participants attending the briefing, QTIC outlined the evidence, showing increasing cancellations, reduced forward bookings and mounting pressure on business viability.

Senator Green acknowledged the seriousness of the issue, noting that fuel price volatility and national fuel security are active considerations at the Federal level. She emphasised the importance of industry feedback and real-world data to inform government decision-making as potential policy responses are assessed.

QTIC reiterated its call for targeted, time-limited relief measures, stronger coordination between State and Federal Governments, and recognition that prolonged inaction risks business closures and job losses across regional Queensland.

The briefing reinforced the message that fuel costs are no longer a short-term challenge but a structural issue requiring coordinated action to safeguard Queensland's tourism economy. Senator Green acknowledged that this is an ongoing conversation.

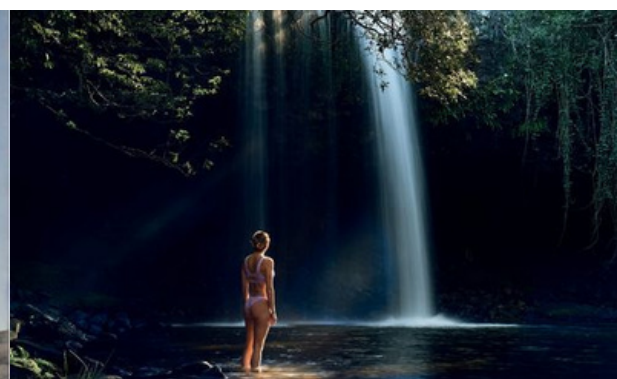
For more information on QTIC: [Home - Queensland Tourism Industry Council](#)

Regional tourism isn't just about travel — it's about economic sustainability.

The There's More at Stake Than Fuel campaign by **Australian Regional Tourism Ltd** highlights what's on the line for regional communities across the country.

Across the MITEZ corridor, tourism drives local jobs, supports small business, and strengthens community resilience. At a time when confidence in regional travel is softening, maintaining momentum matters.

This is a timely reminder that domestic travel plays a critical role in regional economies—particularly across North West Queensland. We support this national call to action and encourage continued investment in, and visitation to, regional Australia.



STRONGER TOGETHER ROADSHOW

Grassroots Volunteer Training and Appreciation Tour

Success Sets the Scene for Stage 2

The Stronger Together – North West Volunteer Roadshow has wrapped up its first stage with strong attendance, positive feedback, and valuable insights from volunteers and community organisations across Julia Creek, Cloncurry, and Mount Isa.

Delivered by Volunteering North Queensland (VNQ), the roadshow brought practical training and support directly to regional communities, many of which face ongoing challenges accessing professional development due to distance, cost, and workforce pressures.

Across the sessions, volunteers and committees received updates, training in AI tools and grant writing, and a genuine opportunity to be recognised and thanked for their contribution.

Data collected is already helping to identify skills gaps, training needs, and workforce sustainability challenges across the region. The success of the roadshow has also reinforced the need for longer-term support infrastructure, including a proposed Volunteer Hub in Mount Isa.

Planning is now underway for Stage 2 of the Stronger Together Roadshow, which will create and deliver more targeted, in-depth training based on identified local needs across Charters Towers, Hughenden and Richmond.

Stage 2 dates:

Charters Towers, Hughenden and Richmond

4 – 9 June 2026

Further details and registrations will be announced soon.

VNQ extends thanks to and community partners, and to the volunteers.



VOLUNTEERING NORTH QUEENSLAND

Subscribe or follow along on socials:

[Subscribe | Volunteering North Queensland](#)

[Volunteering North Queensland | Facebook](#)

[Volunteering North Queensland: Posts | LinkedIn](#)

To be involved in **Stage 2**, contact **Margie Ryder**: margie.ryder@vnq.org.au

Get INVOLVED!

RODEO



COMMUNITY STALLS & INFORMATION BOOTHS

Calling all community groups, charities
and not-for-profit organisations!

Be part of the action at the 2026 Mount Isa Mines Rodeo!
A fantastic opportunity to connect with thousands of people,
promote your cause and be part of our iconic event.



EVENT DATES

**FRI 7TH -
SUN 9TH
AUGUST 2026**



WHO CAN APPLY?

**COMMUNITY GROUPS,
CHARITIES &
NOT-FOR-PROFIT
ORGANISATIONS**



COST

FREE TRADE SITES
for registered charities
& not-for-profit
organisations



**APPLICATIONS
CLOSE**

MAY 17TH

Don't miss out!

★ SPACES ARE LIMITED - APPLY TODAY! ★



Making Sustainability Happen

Engineers, geologists, planners, ecologists, and hydrologists all have a key role to play in delivering solutions to support the resiliency of critical assets. Our services include:

- Dam, levee, creek diversion and drainage infrastructure regulatory, emergency, and post wet season condition and adequacy inspections
- Dam safety and operations training
- Conceptual dam break study to review impact potential and depths
- Erosion and sediment control assessment and design
- Mine waste and contaminated land management (planning, design)
- Remote critical infrastructure/asset inspection, monitoring and management - utilising drone survey imagery and cloud-based 3D mapping, using readily available software such as Propeller.
- Preliminary surface water review and operational drainage mitigation (Propeller).
- Natural disaster asset resilience assessments



Discuss with our experts how we can help support your projects today:

Anton Appelcryn | 0414 182 220
anton.appelcryn@slrconsulting.com

Cosmin Ghebosu | 07 4722 8056
cosmin.ghebosu@slrconsulting.com

Find out more [slrconsulting.com](https://www.slrconsulting.com)





What's on along the MITEZ CORRIDOR

Become a Stallholder!
VEXPO
22 & 23 May 2026

JULIA CREEK
DIRT NDUST FESTIVAL
 29-30 MAY 2026

Queensland

CELEBRATING 30 YEARS

2026 STREET PARADE THEME
"CHRISTMAS IN JULY"
 Time to get your best creation skills on Cloncurry!

COMMERCE NORTH WEST HOSTS
Coach & Coffee Connection

Small Business Month 2026

JOIN US FOR BREAKFAST, COFFEE & CONNECTION. HEAR FROM INDUSTRY LEADERS, COACHING MEMBERS THROUGH TRENDING BUSINESS TOPICS.

13th May, 2026
 9.30am to 11am
 ibis styles | Giuseppe's Cantina

Register Now

OLD MUSIC TRAILS

MOUNT ISA FRI 08 MAY

MOUNT ISA UNDERGROUND HOSPITAL AND MUSEUM PRESENTS
SWING ON A STAR
 A 1940'S DINNER DANCE

THE PACIFIC BELLES TANIA KERRACHIAN (MC)

QMF

Cuppa with the Councillors 8:30 am

18 February
 25 March
 29 April
 27 May
 24 June
 22 July
 26 August
 23 September
 25 November
 16 December

ARE YOU STUDYING ?

COUNTRY UNIVERSITIES CENTRE MOUNT ISA IS A FREE, SAFE, SECURE STUDY FACILITY FOR ANYONE STUDYING WITH ANY HIGHER EDUCATION INSTITUTION IN AUSTRALIA.

- Quiet place to study
- Free high speed internet
- Student access 6am to Midnight
- Free printing
- Dual screen computers
- Refreshments
- Local student community
- Face-to-face local support

REGISTER ONLINE

www.cucmountisa.edu.au

2026 Our Region, Our Future Jobs Expo

Explore. Connect Grow
 Launch Your Future.

This inclusive, community-led event connects people to real jobs, builds skills, and promotes local career pathways across all industries—right here in Mount Isa.

Tuesday 18th August 2026 9am-5pm | Buchanan Park Events Complex

THE BARNYARD BAND

Queensland

MOUNT ISA MINES RODEO
 7-9 AUGUST 2026
 Presented by AKUBRA

TICKETS ON SALE
 mountisarodeo.com.au

ROCKHANA
 GEM. MINERAL & MINING FIELD DAY

SAVE THE DATE
SATURDAY 4TH JULY 2026
 THE CLONCURRY & DISTRICT HISTORICAL SOCIETY MARKETS
SUNDAY 5TH JULY 2026

connect north west

UNITING INDUSTRY. POWERING REGIONAL GROWTH.

SAVE THE DATE

Save The Date

MITEZ
ECONOMIC DEVELOPMENT

2026 Event Calendar

Key dates for MITEZ engagement



General Meeting Forum 2

Thursday 16 July

MITEZ's major event of the year, *The Long Lunch* will be held in Julia Creek with a Paddock to Plate theme, highlighting North West flood recovery and supporting local graziers while showcasing the strength & resilience of the region's agricultural sector.



Roadshow 1

DATE TBC

LGA, regional members & other businesses

Location: Charters Towers & Hughenden



Roadshow 2

Tuesday 13 & Wednesday 14 October

LGA, regional members & other businesses

Location: Mount Isa



Annual General Meeting & General Meeting Forum 3

Thursday 5 November

Review achievements and future plans

Location: Townsville



Partner with MITEZ —
sponsorship opportunities
available across the NW corridor

Our Members

