

From the ceo's desk.....

It's been a difficult start to the new year in many parts of the MITEZ corridor, and North and North West Queensland in general. Impacts from heavy rainfall and flooding have been ongoing since Christmas and the MITEZ team would like to acknowledge the hardship that many rural and regional communities are facing. Industry in the North West has been heavily disrupted, both mining and agriculture, but it's the people in these industries that are profoundly affected and will be for some time as the recovery process begins. This monsoonal event has had a huge impact on livestock, road, rail and airport infrastructure, mining operations, exports and the tourism industry.

MITEZ is resolute in its support for the 7 LGAs in our footprint, and every industry and business proponent within. It has been an incredibly challenging time and while the wet may have eased in some areas, there have been road closures implemented again in the North West as late as yesterday.

Thank you to both State and Federal Governments for the assistance provided to date, including Primary Producer Grants, Disaster Assistance Loans and Disaster Recovery Funding such as hardship assistance and allowances. The economic impact of these events extends for months and sometimes years. Immediate emergency support packages are vital and we are grateful for them.

Significant stock losses have been reported, the worst affected areas being Julia Creek and Richmond. Graziers expect further stock damage given the prolonged wet conditions. Disruptions to logistic supply chains will also continue for many weeks. Road closures have meant mining inputs having to be sourced by longer distance unflooded routes to mine. Concentrate exports have been moved from rail to road to get to Port of Townsville to reach market and reduce stockpile constraints.

Queensland Rail has advised that works on the Mount Isa line are continuing, with planned completion targeted for 31 January and rail traffic expected to resume from 1 February, subject to weather conditions. Ongoing tablelands runoff is continuing to impact sections of the line. To support customers during this period, a temporary intermodal terminal has been established at Hughenden and operations commenced this week. Site access for repair crews remains constrained in some locations as floodwaters recede. The Cloncurry Airport has now reopened following recovery and renewal works after sustaining major damage.

I want to commend the tough, no-nonsense approach and resilient nature of those that live and work in the MITEZ corridor and their steadfastness to overcome adversity. Please accept all offers of assistance so that we can help you on the recovery journey.

With that in mind, please mark your calendars for **16 July 2026**, when MITEZ will host its major event of the year — **The Long Lunch** — in **Julia Creek**. Featuring a Paddock to Plate theme, the event will highlight North West flood recovery, support local graziers, and showcase the strength and resilience of the region's agricultural sector.

It would be wonderful to see as much representation as possible from both State and Federal Government representatives so they can see the recovery efforts and check in on the affected communities. It will be a hard, long journey for many and it is important we support and recognise the resilience shown during these disruptive events.

With the new year underway, I want to extend my sincere thanks to our members for your commitment to the MITEZ corridor. Despite the ongoing wet season challenges, your resilience and support ensure our region remains a crucial contributor to Queensland's economy. In 2026, MITEZ will continue to represent you through a year that will require counsel, collaboration and action.

We will keep providing high impact advocacy and deliver to our soon to be finalised updated **MITEZ Strategic Plan 2026 – 2030**. Our Strategic Plan will guide our efforts to forge a strong, sustainable and diverse regional economy. The MITEZ vision is to lead sustainable economic growth and resilience across the North West Corridor by driving investment, innovation, and partnerships that create globally competitive industries, strong communities, and world class infrastructure.

Our key focus remains:

- *Efficient, Cost Effective, Game Changing Regional Infrastructure*
- *Reduce Barriers and the Cost of Doing Business*
- *Strengthen Regional Identity & Resilience through Partnerships & Promotion*

The first of the MITEZ Forums for the year, where we will commence the activation of part of the draft Plan, will be on **Thursday 26 March** in Townsville. Members and all stakeholders welcome.

Thank you both members and stakeholders for your unwavering support. The MITEZ team look forward to working with you throughout the year.

Support for our flood-affected communities

North and North West Queensland communities have been deeply affected by the recent rainfall and flooding. We are thinking of you. We understand how deeply natural disasters can impact our communities, even when we're familiar with the risks.

Support and resources are available to help you through this challenging period.

- ✓ Primary producers and small businesses can complete a disaster impact survey to help the Queensland Government understand what assistance is needed after a disaster – **[Disaster impact survey for primary producers | Business Queensland](#)**
- ✓ For any disaster recovery grants and loans that may become available for primary producers, small businesses and not-for-profits affected by any of these events, please keep an eye on QRIDA's website: **[Delivering financial assistance for rural and regional](#)**
- ✓ If you're a farmer in need of support, Aussie Helpers is here to assist: **[Aussie Helpers](#)**
- ✓ For Emergency Hardship Assistance, check **[Emergency hardship assistance | Community support | Queensland Government](#)**
- ✓ The QCWA's Public Rural Crisis Fund can provide vital support. Keep an eye on their website for when the fund reopens in 2026: **[QCWA – Public Rural Crisis Fund](#)**
- ✓ For mental health support, Beyond Blue offers resources and guidance: **[24/7 Support for Anxiety, Depression and Suicide Prevention. – Beyond Blue](#)**
- ✓ Information on freight subsidies can be found here: **[Freight Subsidies for Disaster Affected Primary Producers QLD | business.gov.au](#)**
- ✓ For help in agriculture and small business from the Rural and Small Business Financial Counselling Services, reach out to: – Northern Queensland: **[Rural Financial Counselling Service North Queensland](#)**; Southern Queensland: **[Rural Financial Counselling Service \(RFCS\) Southern Queensland • Rural Financial Counselling Service \(RFCS\) Southern Queensland](#)**

We are grateful for the support of these agencies and charities.



Save The Date

MITEZ
ECONOMIC DEVELOPMENT

2026 Event Calendar

Key dates for MITEZ engagement

General Meeting Forum 1

Thursday 26 March

Forum 1: Activation of Strategic Plan

Location: Townsville



Roadshow 1

Wednesday 13 & Thursday 14 May

LGA, regional members & other businesses

Location: Charters Towers & Hughenden

General Meeting Forum 2

Thursday 16 July

MITEZ's major event of the year, *The Long Lunch* will be held in Julia Creek with a Paddock to Plate theme, highlighting North West flood recovery and supporting local graziers while showcasing the strength & resilience of the region's agricultural sector.



Roadshow 2

Tuesday 13 & Wednesday 14 October

LGA, regional members & other businesses

Location: Mount Isa



Annual General Meeting & General Meeting Forum 3

Thursday 5 November

Review achievements and future plans

Location: Townsville



Partner with MITEZ —
sponsorship opportunities
available across the NW corridor

Unlocking economic growth through mining infrastructure repurposing Audit of Mines Industrial Assets Project – findings report.

In December, MITEZ released a strategic report that explores how underutilised mining infrastructure across the **North West Minerals Province (NWMP)** can be repurposed to drive regional economic growth, create jobs, and support Queensland's transition to a net-zero economy.

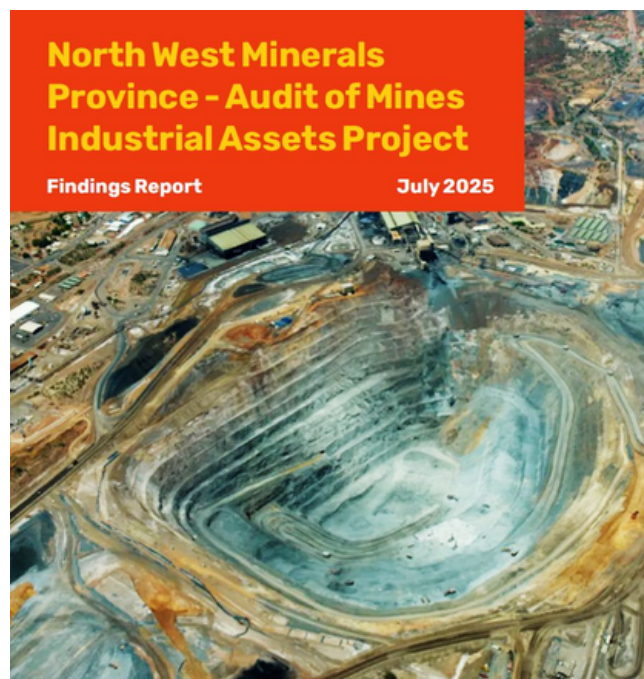
With funding provided from the **Regional Economic Futures Fund** thanks to the Queensland Government, the project wanted to identify opportunities as several mines in the NWMP approach closure.

With communities in the region facing significant economic and social challenges in the very near future, this report identifies practical opportunities to turn these challenges into growth pathways by leveraging existing assets for new uses. Importantly, the term "audit" in the report title refers to a desktop review and strategic analysis, not a financial or compliance audit.

Key Opportunities Identified

- Common-user copper concentrator and smelter in Mount Isa to support multiple producers.
- Reprocessing tailings for valuable minerals and sulphuric acid production, reducing environmental liabilities.
- Regional laboratory and training centre of excellence to build skills and foster innovation.
- Repurposing accommodation facilities for rehabilitation or correctional services, creating new employment streams.

What is in the bigger picture? Repurposing mining infrastructure aligns with Queensland's Regional Transformation Strategy and national priorities for critical minerals and circular economy initiatives. It offers a sustainable way to secure jobs, attract investment, and strengthen the region's economic resilience.



Mount Isa - Townsville Economic Development Zone Inc.



This report is a starting point. Detailed technical and financial assessments will be required before projects can proceed. Collaboration between industry, government, and communities will be key to turning these opportunities into reality.

Check It Out
↓

You can request the full report by contacting Maria James on ceo@mitez.com.au

A shared call for action – MITEZ Analysis & the Gas Market Review

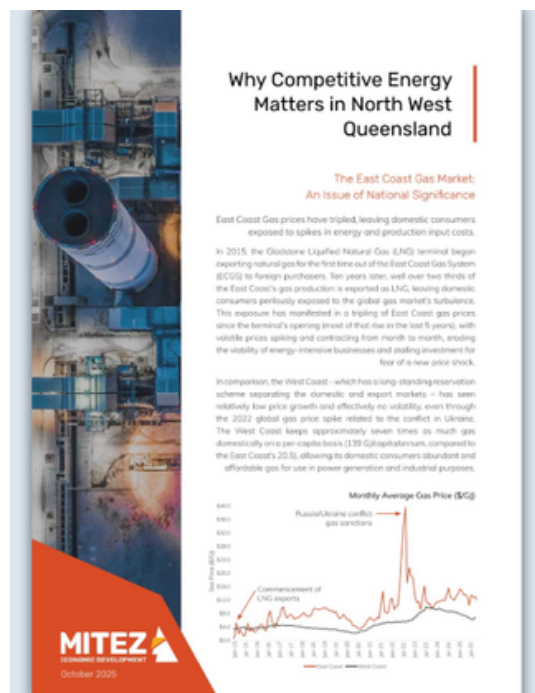
The Australian Government's Gas Market Review, released in December 2025, and MITEZ's North West Queensland Gas Market Analysis both underscore a critical message: gas remains essential for Australia's energy transition and regional economic stability.

The National Gas Market Review finds that while emergency measures introduced since 2022 have helped avert short-term shortfalls, structural challenges persist. Declining southern production, tight supply-demand balances, and exposure to international LNG prices continue to threaten affordability and reliability for domestic users. The Review recommends fundamental reform, including a domestic gas reservation scheme, streamlined regulation, and investment in infrastructure to transport gas from northern regions to southern demand centres. These changes aim to insulate Australian industry from global price volatility and secure supply during the transition to net zero.

The MITEZ analysis highlights why these reforms matter for North West Queensland. The region's North West Power System (NWPS) relies on gas for over 80% of its electricity generation, and gas is a critical input for major processing operations such as Phosphate Hill and Glencore's copper smelter. Gas price volatility has already impacted competitiveness and investment confidence, with stakeholders identifying <\$10/GJ as a sustainable benchmark. Without intervention, high gas costs risk undermining \$10 billion in annual output and more than 15,000 jobs across the MITEZ corridor.

Both reports converge on key priorities with solutions shared across both reports:

- Domestic Gas Reservation: A national scheme to guarantee supply and put downward pressure on prices.
- Infrastructure Investment: Expanding pipeline capacity and storage to move gas efficiently from northern basins like Beetaloo to demand centres.
- Market Reform: Improving transparency, competition, and contract flexibility to strengthen bargaining power for industrial users.
- Energy Transition Support: Leveraging initiatives such as Queensland's \$200 million North West Energy Fund to diversify generation and reduce long-term reliance on gas.



For North West Queensland, gas is not just an energy source – it is the backbone of mining, processing, and manufacturing. As the Government moves to consult on reforms, MITEZ will continue advocating for policies that recognise the unique challenges of regional economies and ensure they have the energy security needed to thrive.

Full 37-page MITEZ report available upon request contact: ceo@mitez.com.au

Read the full Australian Government Gas Market Review here – [gas-market-review-report.pdf](#)

EPBC Act reforms: what they mean for North West Queensland

On 28 November 2025, the Federal Parliament passed landmark reforms to the Environment Protection and Biodiversity Conservation (EPBC) Act 1999. These changes aim to deliver stronger environmental protections while streamlining approvals for sustainable development.

Key Changes

- **National Environmental Standards (NES):** Clear benchmarks for biodiversity protection and land use.
- **Independent Regulator:** A new National Environment Protection Agency (NEPA) will oversee compliance and enforcement.
- **“Net Gain” Principle:** Projects must contribute positively to environmental outcomes.
- **Unacceptable Impact Tests:** Stricter thresholds for activities affecting Matters of National Environmental Significance (MNES).
- **Streamlined Assessments:** Faster, more transparent pathways for proponents.

The reforms align closely with Queensland’s bioregional planning initiative for the Julia Creek–Richmond corridor, a critical zone for mining and agriculture. This means:

- **Better clarity for project approvals** through GIS-based mapping of sensitive habitats.
- **Cumulative impact assessments** to protect biodiversity while supporting economic growth.
- **Enhanced First Nations engagement** in planning and decision-making.

There are some concerns however that these reforms will also negatively affect communities, industries, and local government operations. These issues have been raised by NWQROC in December 2025:

- **Increased regulatory complexity and uncertainty** with more layers that will affect everyday operations.
- **Threats to agricultural practices and land maintenance** with routine tasks such as mowing roadsides, weed control, and fenceline maintenance may become subject to additional compliance burdens.
- **Safety and connectivity concerns for road infrastructure** with amendments potentially impeding vegetation clearing needed for road safety and post flood recovery work.
- **Uncertainty for mining and major projects** with unclear pathways for project approvals and land use agreements, undermining investment confidence.

MITEZ has been promoting local voices in discussions and advocated for standards that balance environmental stewardship with resource development. MITEZ will also actively collaborate to ensure local concerns are incorporated into new standards, while supporting sustainable growth and practical land management without burdening regional communities or economies.



To read more on the reforms **click here -**
[Environment protection reforms - DCCEEW](#)

To read more on the statement from NWQROC
click here - [Local leaders across NWQ sound alarm at changes to EPBC Act – North West Queensland Regional Organisation of Councils](#)

Gulf Regional Water Assessment – Stakeholder Update

The Gulf Regional Water Assessment (GRWA) has continued to progress throughout 2025. The Phase 2 detailed analysis of shortlisted water supply options is well underway, supported by input from the Working Group (WG), Stakeholder Advisory Group (SAG), and Technical Advisory Panel. The shortlisted options include:

- Groundwater opportunities to support mining operations (region-wide)
- Water harvesting (private development)
- Julius Dam – Northwest Queensland Water Pipeline duplication and greenfield corridor (to supply copper mines)
- Julius Dam – Northwest Queensland Water Pipeline duplication and greenfield corridor (to supply the Critical Minerals Zone)
- Underground technologies, including underground dams and managed aquifer recharge

*Note: Groundwater opportunities for vanadium and graphite mining in McKinlay, Richmond, and Croydon LGAs are being investigated separately under the Critical Minerals Queensland – Groundwater Baseline Project.

The SAG met on 25 November 2025, where the lead contractor presented updates on detailed analysis, including preliminary hydrology and environmental considerations.

Current activities focus on:

- Developing design concepts
- Preparing cost estimates
- Assessing economic viability
- Understanding social and cultural impacts

This work will inform the development of the draft GRWA, which will also consider other infrastructure options with existing business cases or similar assessments.

Next Steps:

- March/April 2026: GHD (Lead Contractor) will present draft findings to the WG and SAG.
- Mid-2026: Draft GRWA will be released for public consultation.

The GRWA team is also working to increase engagement with Traditional Owners and Native Title Holders as the project advances.



Celebrating collaboration and milestones at the Port of Townsville

Early December, MITEZ was proud to welcome the **PRL Group team** to Townsville and assist with preparations for their thank-you event at Quayside Terminal thanks to the **Port of Townsville**. It was fantastic to see so many partners and supporters come together to mark a significant achievement for our region.

Special thanks to **Minister Dale Last, Adam Baillie MP, Janelle Poole MP, and Cr Brady Ellis** for attending and for their ongoing support. Your leadership and commitment have been instrumental in making this milestone possible.

In just 72 days from mine to port, the first shipment is now a reality – an incredible example of what can be achieved when government, industry, and regional organisations work together. This success highlights Queensland’s “open for business” approach and the incentives driving operations and future production opportunities for the North.

Collaboration truly brings success, and we look forward to continuing this journey with PRL Group and showcasing what Queensland has to offer.

Here’s to more milestones ahead – starting with the next chapter for PRL in Queensland!



Wandarra leading the way: Hemp manufacturing ready to scale in North Queensland

MITEZ along with Lisa McDonald from RDA visited **Wandarra's hemp processing facility**, and the message is clear: North Queensland is ready to lead Australia in sustainable building materials.

Hemp is one of the most versatile crops on the planet – used for food products, construction materials, and biodegradable containers. It's also a **carbon-positive crop**, absorbing more CO₂ than most plants, making it a perfect fit for decarbonisation projects.

Wandarra has developed innovative hemp-based building products that are ready to scale. These materials:

- Reduce reliance on imported products
- Offer **low-carbon** alternatives for housing and infrastructure
- Keep manufacturing and jobs in **North Queensland**

Hemp is not cannabis – it's a sustainable crop and a green solution driving regional economic growth and climate action. At Wandarra, hemp is seen as the cornerstone of the circular economy.



LEARN MORE



For more on Wandarra [Wandarra Limited](https://www.wandarra.com.au/)

<https://www.csiro.au/en/research/production/food/plant-protein-hub-north-qld>

<https://hulkbuild.com.au/>

<https://hulkpack.com.au/>



Boosting regional economies through agritourism: opportunities for the MITEZ Corridor

The Queensland Government has introduced new planning guidance to help councils support agritourism – creating fresh opportunities for farmers and communities.

What's Changing?

- **Simplified Planning Rules:** Local governments can now streamline approvals for agritourism activities like farm stays, paddock-to-plate dining, and on-farm events.
- **Clear Definitions:** Activities such as farm tours, tasting experiences, and educational programs are formally recognized in planning schemes.
- **Economic Diversification:** Agritourism is a key pillar of the state's Destination 2045 strategy, reducing red tape and boosting rural economies.

Agritourism offers new income streams for graziers and producers, visitor experiences that showcase the unique landscapes and heritage of North West Queensland, and community resilience through diversified business models. The MITEZ corridor is well-positioned to attract visitors seeking authentic outback experiences and we will continue to champion initiatives that grow regional economies and strengthen community resilience.

Read more about Destination 2045 here [The Destination 2045 plan | Queensland Government](#)

Geotourism in the Mount Isa region: unlocking the stories beneath our feet

North West Queensland is not only a global mining powerhouse – it's a geological wonderland. The Mount Isa region, famous for its rich mineral deposits, offers an unparalleled opportunity to grow geotourism, a form of tourism that celebrates Earth's geological heritage, landscapes, and processes.

Why geotourism matters

Geotourism is about more than sightseeing. It connects visitors to the deep-time stories of our planet, fostering appreciation for natural landscapes and the resources that sustain modern life. For Mount Isa and the broader North West, geotourism represents a chance to diversify the economy, attract new visitor markets, and showcase the unique beauty of our region.

During a recent visit to Mount Isa, the MITEZ team was amazed by the breathtaking scenery and hidden gems that make this region so special. Highlights included:

- **Warrigal Waterhole** – a serene oasis surrounded by rugged outback terrain.
- **Mary Kathleen** – the fascinating remnants of a former uranium mining town, now a striking historical site.
- **Fountain Springs Waterhole** – a picturesque spot perfect for cooling off and appreciating nature.
- **Granite Mine** – showcasing the raw beauty and geological diversity of the North West.



These locations are more than beautiful, they tell the story of billions of years of geological evolution and human interaction with the land.

The Mount Isa Inlier is one of the world's most significant mineral provinces, with rock formations dating back 1.8 billion years. This ancient terrain reveals tectonic shifts, volcanic activity, and sedimentary processes that created rich deposits of copper, lead, zinc, and silver. These same forces shaped the dramatic ranges and escarpments that define the region's landscape.

With global interest in authentic, educational travel experiences growing, geotourism offers Mount Isa a competitive edge. By investing in interpretive signage, guided tours, and partnerships with local operators, we can turn our geological heritage into a compelling visitor experience that complements our mining story.

For more information on Geotourism – [Leisure Solutions®](#)
Or follow on LinkedIn – [Leisure Solutions®: Overview | LinkedIn](#)

Preparing for unprecedented workforce demand in North Queensland

North and North West Queensland are entering one of the most significant periods of workforce demand in decades, with more than \$29 billion in major projects planned across the region. This surge spans construction, energy, manufacturing, health, education, and community services – creating opportunities and challenges that require a coordinated response.

The BuildSkills Workforce Plan identifies six megatrends shaping Australia's future workforce: decarbonisation, geopolitics, regulation and ESG, housing, demographics, and technology. These trends align with the region's priorities, and preparing for these changes means investing in skills for clean energy, digital technologies, and sustainable development.

To support this, the Queensland Government has reappointed **Regional Development Australia Townsville and North West Queensland (RDA TNWQ)** to deliver the **Jobs Townsville North Queensland (JTNQ)** Regional Jobs Committee for 2025–27. JTNQ will continue to bring together industry, councils, education providers, and community organisations to address real workforce needs and ensure local people can access local jobs.

With billions in projects and a national focus on workforce transformation, collaboration is key to build a workforce ready for the region's next chapter.

Read the full BuildSkills report here – [2025–26 Workforce Plan.pdf](#)
Visit the Jobs North Queensland website – [Jobs North Queensland](#)

Regional Development update | Townsville

Office of the Coordinator-General has marked a major milestone at **Cleveland Bay Industrial Park (CBIP)**, with the subdivision plan and easements now signed for the final developable lots delivered under the Townsville State Development Area Acceleration Project.

CBIP comprises 125 hectares of fully serviced industrial land across 38 lots and has already attracted \$162 million in capital investment, supporting 663 jobs. The precinct is enabling new and emerging industries, including projects linked to **QRCUF** and **JetZero**.

With the final lot now registered, Cleveland Bay Industrial Park is well positioned for the next wave of industrial growth, reinforcing confidence for investors and strengthening Townsville's role as a key economic hub along the MITEZ corridor.



Photo credit OCG

Powering the outback: advanced long-duration energy storage for remote operations

Reliable and affordable energy remains a critical challenge for businesses operating across Northern Australia. Remote locations, high diesel reliance, grid constraints, and extreme operating conditions continue to place pressure on mining, agriculture, and regional infrastructure.

AusFlow Energy is addressing this challenge by introducing long-duration battery energy storage systems designed specifically for continuous operation in Northern Australia environments.

The solution being deployed by AusFlow is based on vanadium flow battery (VFB) technology, supplied by Rongke Power (RKP), a global leader in vanadium flow battery systems, with a strong track record in utility-scale and industrial energy storage deployments. Unlike conventional battery technologies, vanadium flow batteries are well suited to regional Australian conditions due to their long service life, high cycling capability, and inherent safety characteristics.

AusFlow is now working with regional stakeholders to place small-scale installations that allow local businesses to assess performance under real operating conditions. These pilots are intended to support applications such as renewable energy integration, reduced diesel usage, and improved power stability for remote sites.

Alongside this deployment activity, Richmond Vanadium Technology (RVT) is supporting broader industry discussions around the future development of an Australian vanadium battery value chain. RVT's involvement reflects a shared interest in ensuring that future energy storage deployment in Australia is aligned with domestic resources, regional capability development, and long-term economic benefits for Northern Australia.

Together, this approach combines near-term action with long-term regional alignment—introducing proven energy storage technology today, while laying foundations for future local industry participation.



Offers for Pilot installations now open

AusFlow Energy is currently seeking interest from regional businesses for pilot battery installations, including:

- **6-container configuration: 360 kW / 1.44 MWh**
- **Larger systems are available**

Email: peter.morrow@ausflowenergy.com

Mobile: 0413 941 550

Peter from AusFlow Energy and Brendan from RVT are keen to discuss how these solutions can support your operations – whether it's reducing diesel reliance, integrating renewables, or improving grid stability.



LEARN MORE

[AusFlow Energy](#)

[Richmond Vanadium Technology - Home](#)

Update from enviroMETS Queensland

In early December 2025, enviroMETS achieved an important milestone with the submission of the Post-Mining Land Use – Multi Criteria Assessment Tool and associated supporting materials to the Department of State Development, Infrastructure and Planning (DSDIP), Regional Economic Futures Fund (REFF) Team.

The Project kicked off in July 2024, with underpinning funding by DSDIP together with direct and in-kind funding from Regional Councils, mine owners, and industry experts. enviroMETS was well supported by our research partner CRC TiME.

The final Milestone (8 of 8) concluded the Project with the 'Package' submission which includes:

- **User Guide**
- **Scored Options Model (Excel Tool)**
- **Quantitative Options Model (Excel Tool)**

'The Tool has exceeded our expectations, and we have received positive feedback and support throughout the process. We are delighted to have finalised the Tool which will benefit regional communities in Queensland through improved post mining land use outcomes'.

'This is a fantastic milestone for enviroMETS and the Queensland resources industry and regional communities. Congratulations to the enviroMETS team on delivering a practical key step towards achieving future Transformative Post Mining Land Use opportunities.' enviroMETS' Chair Russell Merz

Once approved for release by the REFF Team, the Package will be available on the enviroMETS website. [enviroMETS Qld Limited - Home](#)



Agrisolar shows how renewable energy and agriculture can thrive together, creating new income streams while preserving rural livelihoods.

Click here for the full fact sheet from the Clean Energy Council - [How Renewable Energy And Agriculture Thrive Together: Fact Sheet | Clean Energy Council](#)

Queensland procurement policy – key updates for 2026

The refreshed Queensland Procurement Policy starts 1 January 2026, creating new opportunities for regional businesses:

- **Local-first focus** – More support for small, regional, and family businesses.
- **Simpler tendering** – Plain-language documents and smaller contracts to cut red tape.
- **Transparency & feedback** – Mandatory tender debriefs and clearer Forward Procurement Pipeline.
- **Supplier Code of Conduct** – New standards for ethical and sustainable practices.

Why it matters: Easier access to government contracts, stronger regional participation, and opportunities for innovation.

For more information on what this means for you: [Queensland Procurement Policy | Department of Housing and Public Works](#)

Resources powering regional growth: QRC’s 2024–25 impact report
“A little bit of Queensland goes a long way.”

That’s not just a slogan – it’s the reality. The Queensland Resources Council’s 16th Economic Contribution Report, released on 27 November 2025, reveals that in 2024–25 the sector:

- Added A\$115.2 billion to the state economy (~25%)
- Supported ~71,000 direct jobs and 549,500 total jobs (~1 in 5 Queenslanders)
- Generated A\$35.8 billion in spending with 17,600 local businesses & 1,733 community groups
- Paid A\$7.9 billion in royalties funding schools, roads, hospitals & more

These achievements were celebrated at the State of the Sector Lunch in Brisbane. The report also launched QRC’s “A Little Bit of Queensland” campaign, showcasing how <0.1% of the state’s land delivers outsized economic impact.

Why It Matters for North West Queensland – critical infrastructure funding from the resources sector flows directly into regional roads, schools, and essential services, strengthening the backbone of our communities. It also supports small businesses and community groups, ensuring investment stays local and benefits those who live and work here. While coal has seen a decline, other sectors remain resilient, but continued effort is needed to secure jobs and build long-term regional resilience.

MITEZ is committed to amplifying the impact of Queensland’s resources sector by championing regional voices, securing strategic funding for infrastructure and diversification, and promoting the “A Little Bit of Queensland” message across North West Queensland. Together, we can ensure that every opportunity translates into lasting investment, stronger communities, and a resilient future for our region.

Home – Queensland Resources Council



Renewables driving down Queensland power prices

The **Queensland Renewable Energy Council (QREC)** has welcomed the Queensland Audit Office's Energy 2025 report, confirming that renewable energy, especially solar, is helping reduce wholesale electricity prices for households and businesses.

The report highlights that rooftop solar significantly lowers demand on coal power plants during solar-rich periods, putting downward pressure on prices. While average wholesale prices rose by 24.8% in 2024–25, this increase was driven by outages at major coal and gas plants and extreme weather – not renewables.

QREC says the findings strengthen the case for accelerating Queensland's transition to a modern, renewable-led energy system. Continued investment in new generation, firming technologies, and transmission will improve resilience and protect consumers from volatility.

As Queensland's peak renewable industry body, QREC is committed to working with government and industry partners to deliver cleaner, more reliable, and affordable energy for the state's growing economy.

You can view the Queensland Audit Office Report – Energy 2025 here: [Energy 2025 \(Report 7 – 2025–26\).pdf](#)



Have your say on regional airfares

Affordable and reliable air services are critical for North West Queensland's connectivity and economic growth. The Productivity Commission is conducting an inquiry into regional airfares and is inviting submissions from businesses, communities, and stakeholders.

This is your chance to influence policy and highlight the challenges and opportunities for improving air travel in our region. Submissions can address issues such as pricing, route availability, and innovative solutions to make regional flights more competitive.

Key Details:

- Deadline: 15 March 2026
- Focus: Determinants of regional airfares and options for improvement
- How to Participate: Download the issues paper and submit via the Productivity Commission website.

With your contribution we can ensure the unique needs of North West Queensland are heard – helping shape solutions that support regional development and economic resilience.



Learn more and make your submissions here – [Call for submissions – Determinants of regional airfares | Productivity Commission](#)

MITEZ will also prepare a submission – if you would like MITEZ to amplify your voice feel free to reach out and let us know – ceo@mitez.com.au.

Southern Gulf NRM – strengthening rivers and communities

Southern Gulf NRM is nearing completion of the Riverine Site Maintenance Project, achieving strong environmental improvements and valuable community capacity building across two significant river systems in the MITEZ region.

The project continues vital recovery efforts following the 2019 Monsoon Trough, focusing on two key sites: Sedan Dip on the Cloncurry River and a second location near the Hughenden Golf Club on the Flinders River. This project is funded through the joint Commonwealth–State Disaster Recovery Funding Arrangements (DRFA).

Restoring River Health at Sedan Dip in Cloncurry. Targeted recovery works have produced impressive ecological results at this site. Weed control, native tree infill planting, and erosion-stabilisation activities have led to excellent plant survival, stronger ground cover, and a visible increase in young natives. These improvements significantly enhance the resilience and long-term stability of the riverbank, supporting healthier waterways and reduced erosion risk.

Supporting Recovery on the Flinders River near Hughenden. Scheduled weed control before and after the wet season has greatly reduced invasive species and helped previously planted tube stock recover. Many natural recruits are now flowering, signalling a steady return to ecological balance and contributing to long-term site stability along the Flinders River.

Building Local Skills and Regional Capacity. A major highlight of the project has been the investment in local capability development. Southern Gulf NRM staff completed drone licensing and GIS training, boosting in-house monitoring and mapping capacity. Workshops in revegetation, nursery management, mapping and field navigation empowered landholders, community members and ranger groups with practical skills.

A local ranger group also received GIS mentoring and visited the DAF Walkamin Research Facility, further supporting their goal of establishing a native plant nursery to supply future revegetation projects across the region.

This project has strengthened both the ecological condition of our riverbanks and the capacity of local people to care for these systems into the future. As the project concludes, Southern Gulf NRM acknowledges the contributions of landholders, rangers and regional partners who played a critical role in delivering these positive outcomes.



For more information and further reading:

LinkedIn: [Southern Gulf NRM: Overview](#) | [LinkedIn](#)
Website: [Home – Southern Gulf NRM](#)



Northern Stevedoring Services: supporting Regional Queensland's supply chain

For more than five decades, **Northern Stevedoring Services (NSS)** has played an important role in regional Queensland's logistics network. Founded in 1971, NSS is a leading provider of integrated stevedoring, transport, warehousing and logistics services across major northern ports including Townsville, Cairns, Gladstone, Mackay and Weipa.

With shareholders, Glencore and Qube, NSS draws on deep industry experience to deliver end-to-end "ship to shore, shore to door" capability that supports mining, agriculture, defence and international trade.

NSS is known for investing in regional facilities, technology and a skilled workforce to deliver reliable outcomes for customers. Operations span bulk minerals, containers, livestock, wind turbine blades and general cargo, supported by disciplined planning, equipment capability and strong operational governance.

Safety underpins every task NSS undertakes. The business maintains a strong safety culture, backed by training, risk management and clear procedures to ensure work is completed to a consistent standard, even when requirements change or cargo profiles are unfamiliar.

In 2025, NSS pivoted to support Exercise Talisman Sabre 2025, including the discharge of military ordnance for multiple nations' armed forces. During the same period, NSS returned to steel discharge and transport through the Port of Townsville for the first time in several years.

General Manager Mark George said new work demands new thinking.

"When the task is unfamiliar, the discipline has to be familiar," he said. "That means doing the fundamentals every time. Planning, risk controls, clear communication and a team that will stop and reassess if something does not look right. We take on complex, non-routine work without compromising safety."

As demand grows and supply chains evolve, NSS remains focused on building stronger trade capability across regional Queensland, supporting the industries that rely on ports that run safely, efficiently and without disruption.

LinkedIn - [Northern Stevedoring Services \(NSS\): Overview | LinkedIn](#)
Website - [Northern Stevedoring Services Pty Ltd](#)

Phosphate Manufacturing Milestone in Cloncurry

Chatham Rock Phosphate Limited has confirmed the proposed sale of its Australian subsidiary, **Avenir Makatea Pty Ltd**, to Melbourne-based **Austure Industries Pty Ltd** for AU\$1.4 million, marking a significant step forward for downstream phosphate manufacturing in North West Queensland.

The transaction includes the establishment of a new Dicalcium Phosphate (DCP) and Monocalcium Phosphate (MCP) manufacturing plant in Cloncurry, providing a local market for phosphate from the Korella North mine. Importantly, the plant will utilise innovative, low-emissions technology and renewable electricity, supporting sovereign manufacturing capability for critical cattle feed supplements currently imported into Australia.

This development represents a strong alignment with regional priorities around value-adding, supply chain resilience and industrial diversification across the MITEZ corridor.

New job opportunities – an update from Harmony Eva Copper

2026 will be a significant year for the Eva Copper Mine Project, marking the start of major construction activity onsite. Following the recent rain event in the North West, we're pleased to confirm the project site has held up well and mobilisation to site is underway.

Eva Copper will create around 1,000 jobs during construction. Hiring locally is a priority for Harmony and our project partners with all applications assessed on merit to ensure we build a safe and high performing team. Committed to creating meaningful employment and training opportunities in the region. Harmony offers a local allowance for team members who live in Cloncurry.

We are expanding our teams and currently have job opportunities across a range of fields, including:

- Environment Advisor and Environment Officer
- Site Services Supervisor
- Civil Construction Supervisor
- Surveyor
- Field Engineer
- Safety Lead and Safety Advisor
- Site Access Control Officer
- Travel Administrator
- IT Support Officer
- People and Culture Advisor
- Site Administrator

Through the Eva Copper Alliance (our partnership with Thiess), we're recruiting a drill blast crew, production operators and maintenance team members for the project. Alliance roles will be recruited through Thiess.

Apply today

Join the Eva Copper Mine Team as we build Queensland's next big mine. Find more information about the roles and how to apply on [Jobs North West Queensland](#)



We want to hear from our valued supporters and stakeholders - what are we doing well and what can be improve on? What more should we be doing to increase drought resilience in the region?

The survey will take between 5-10 minutes to complete.

By participating you can go in the running to win a wireless weather station (valued at \$200)!

Prize will be drawn and winner contacted in February.



TNQ Hub Stakeholder survey



Spotlight on NEW MITEZ MEMBERS

We are excited to welcome **Concentis** as a new member of the MITEZ network.

Concentis is a leading project resourcing specialist, trusted by Australia's mining, energy, and infrastructure sectors for more than 15 years. Their mission is clear: connecting the right professionals to the projects that shape Australia's future. With expertise in both permanent recruitment and contract placements, Concentis ensures clients achieve results that keep projects on time and on budget.

With a network of over 5,000 skilled project professionals and offices in Brisbane, Gladstone, and Perth, Concentis combines local expertise with national reach. Their people-first approach goes beyond filling roles—they build partnerships that align talent with business goals and reduce hiring risk.

Concentis also sets a new benchmark in contractor care through Connect@Concentis, a dedicated program designed to support, retain, and empower contractors throughout their careers. This commitment helps clients attract and retain high-performing talent while ensuring contractors feel valued and supported.

From powering large-scale resources operations to delivering renewable energy initiatives and future-proofing critical infrastructure, Concentis provides the expertise that keeps Australia moving.

We look forward to working with Concentis as they continue to play a vital role in shaping the future of our region and beyond.

[Home - concentis.com.au](https://concentis.com.au)

[Connect@Concentis - concentis.com.au](mailto:Connect@Concentis)

[Concentis: Overview | LinkedIn](#)

CHECK IT OUT



concentis

Spotlight on NEW MITEZ MEMBERS



MITEZ is delighted to welcome Coogee Chemicals as our newest member.

Founded in 1971, Coogee Chemicals has grown into a leading Australian company specialising in chemical manufacturing, bulk chemical storage and distribution. With operations spanning multiple states and a strong reputation for safety, sustainability, and technical excellence, Coogee brings a wealth of expertise to our region.

Coogee Chemicals have operations in Mount Isa and Townsville, and are helping to shape the MITEZ region through:

- Strategic Alignment – with a focus on advanced chemical manufacturing and supply chain efficiency that aligns with industrial growth and regional diversification.
- Regional Opportunities – capabilities in chemical storage, transport, and manufacturing can support emerging industries in minerals processing, renewable energy, and water treatment.
- Commitment to Sustainability – Coogee is actively exploring low-emission technologies and circular economy solutions.

Coogee Chemicals is open for collaboration across several areas, including infrastructure development for bulk chemical logistics, rare earth and critical minerals projects, battery minerals, advanced chemical manufacturing, and workforce development through training and skills programs in chemical engineering and industrial operations.

We look forward to working with Coogee Chemicals to strengthen the economic backbone of the MITEZ region and create new opportunities for industry and community.

Welcome aboard, Coogee Chemicals!

Explore more here – [A Diversified Chemical Manufacturing Company | Coogee](#)
Connect on LinkedIn here – [Coogee Chemicals: Posts | LinkedIn](#)



Celebrating STEM Changemakers: a transformative 2025

In December 2025, Sarah Chapman shared the incredible impact of STEM Changemakers across regional, rural, and remote Queensland. What began as a bold question – what if girls could see themselves in STEM by solving real problems with real experts? – has grown into measurable, life-changing outcomes.

In 2025, Girls' interest in STEM careers soared from 47% to 85%, awareness of pathways from 45% to 89%, and aspirations from 41% to 86%. Extracurricular STEM engagement nearly tripled, and families and industry experts stepped up like never before.

This success happened because girls were trusted with real-world challenges, families were brought into the STEM conversation, industry stepped up as visible and human role models, and communities invested in long-term change rather than one-off events. Together, these elements created an ecosystem where confidence and opportunity could thrive.

Geography should never limit opportunity. The ripple effects of this work will be felt for generations.



Sponsorship opportunities are now open for 2026 and beyond. To be part of STEM Changemakers, contact Sarah Chapman via STEMChangemakers@outlook.com. For more information on the 2026 program in the MITEZ region, go to [STEM Changemakers](#)

Delivering the Right Skills for Queensland

The Right Skills

STRATEGY 2025 – 2028

DELIVERING
FOR QUEENSLAND



The Queensland Government's The Right Skills Strategy 2025–2028 is a more than \$5 billion investment to strengthen our economy and support more than 430,000 job opportunities by 2028. The strategy will expand training in regional areas, deliver state-of-the-art TAFE infrastructure, and support the next generation of trainers. By partnering with industry, training providers, and communities, the strategy will close skills gaps in key sectors and create clear career pathways.

LEARN MORE

[The Right Skills Strategy |
Queensland Government](#)



What's on along the MITEZ CORRIDOR

Community recovery
Emotional support



Call for dedicated 24 hour disaster counselling support

Lifeline 1800 116 671

**STORM
BUSHFIRE
FLOOD
DROUGHT**

Rural Aid is here to help

Registering ahead of time not only ensures faster support for you and your family when disaster strikes, it strengthens the collective voice of farmers across your community – helping Rural Aid advocate for greater assistance when it's needed most.

RURAL aid **BE PREPARED** **REGISTER NOW**
1300 327 624 | ruralaid.org.au

TOURISM SUPPORT HUB



Visit the Tourism Support Hub for Guidance and Support

The Tourism Support Hub is here to help tourism businesses recover and thrive. Access expert advice, resources, and support to strengthen your business and plan for the future.

DELIVERING FOR QUEENSLAND **Queensland Government**

\$25,000 grants for small businesses

North Queensland Monsoon Trough, Associated Tropical Cyclone Koji and Severe Weather

Commencing 24 December 2025

DELIVERING FOR QUEENSLAND **Queensland Government**

ARE YOU STUDYING?



COUNTRY UNIVERSITIES CENTRE MOUNT ISA IS A FREE, SAFE, SECURE STUDY FACILITY FOR ANYONE STUDYING WITH ANY HIGHER EDUCATION INSTITUTION IN AUSTRALIA.

- Quiet place to study
- Free high speed internet
- Student access 6am to Midnight
- Free printing
- Dual screen computers
- Refreshments
- Local student community
- Face-to-face local support

REGISTER ONLINE



www.cucmountisa.edu.au

Country Universities Centre **Bringing degrees closer to regional, rural and remote Australia.** 16 Miles Street Ph: 0472 669 909

**Wednesday
25 February 2026
5:30pm**

**ZONTA
Information
Session**



ZONTA CLUB OF MOUNT ISA INC

**JULIA CREEK
DIRT
NDUST
FESTIVAL**

CELEBRATING 30 YEARS

17-19 APRIL 2026

Queensland

2026 STREET PARADE THEME

"CHRISTMAS IN JULY"

Time to get your best creation skills on Cloncurry!



**SAVE
-THE-
DATE-**

**PLAN THE PERFECT
OUTBACK SOUNDS
WEEKEND IN
MOUNT ISA**



THE OUTBACK

BUCHANAN PARK, MOUNT ISA SAT 09 MAY

**OUTBACK
SOUNDS**

KAYLEE BELL (NZ)
THE WOLFE BROTHERS
ZAC & GEORGE → TAYLOR MOSS
WILLIAM BARTON → HOMEGROWN TRIO
2026 TOYOTA STAR MAKER
LOCAL ARTISTS → LINE DANCING → CULTURAL EXPERIENCES



QMF **FOX** **Queensland Government**

OUTBACK SKIES

**ART
COMPETITION**

All mediums welcome!
Draw inspiration from the outback skies.

WINNER - \$1000
PEOPLES CHOICE \$500

Entries open up until the 29 April 2026.

**ENTRY FORM AND FULL T&CS CAN BE FOUND AT
FESTIVALOFOUTBACKSKIES.COM.AU**

**BOOK
TICKETS
NOW**



DAY 1 FRIDAY MAY 1ST 6:00PM
**OPENING NIGHT
BULLS & BRONCS**



EVA COPPER MINE PROJECT

Lets talk jobs,
business and local
opportunities.

**Wednesday 18
February 2026**

5.30PM TO 7.30PM

Cloncurry Community
Precinct on Scarr Street

Join us for a Community Information Evening to hear the latest on the project, what it means for Cloncurry and the region, and what's ahead.

Meet the project team, learn about the mine construction program, and explore upcoming job, training and local supplier opportunities.

You'll also have the chance to ask questions and learn how Harmony and our partners are supporting the local community.

SCAN TO REGISTER!



CERTIFICATE III IN RURAL OPERATIONS - AHC32822



Start your career in the rural operations industry with a Certificate III in Rural Operations. This course will give you the skills and knowledge needed for success in the rural industry.



Course Delivery

On-site training at
our Townsville office
Workbook s provided
Recognitio n of Prior
Learning



Duration
10 weeks



Outcome

Nationally recognised
qualification



Locations

15+ training centres
across Queensland
and Western
Australia



Course Fee

Career Start funding
available
\$30 or \$50 only if
eligible

RURAL OPERATIONS INDUSTRY - AT A GLANCE



Employment Outlook

According to the Australian Government's Jobs and Skills employment projections, agriculture, construction and mining industries are all set to experience substantial growth between now and 2033.



Rural Operations Industry Roles

Senior Rural Operations Farmhand, Garden Labourer, Bore Runner, Station Hand, Landscape Labourer, Trades Assistant, Machinery Operator, Storeperson, Traffic Controller, Loader Operator, Rural Sales Assistant



What Will I Get With This Course?

First Aid, CPR, Roller, Skid Steer and Excavator tickets, ACDC Chemicals Distribution Control ticket, Work Safely at Heights ticket, Confined Spaces ticket

A green rounded rectangular button with the text "BMD READY" in white, bold, sans-serif capital letters.

PAVING PATHWAYS FOR A CAREER IN CIVIL

AT BMD, WE'RE PAVING PATHWAYS FOR NEW ENTRANTS TO BEGIN A REWARDING CAREER IN THE CIVIL CONSTRUCTION INDUSTRY WITH A FIVE-WEEK PROGRAM DESIGNED FOR YOU TO HAVE A GO AND SEE IF IT'S RIGHT FOR YOU.

WHAT'S INVOLVED?

You'll spend two weeks learning the basics of civil construction at BMD from our industry experts before joining our project teams onsite for a paid, three-week structured workplace learning experience.

Here you'll be supported to get hands-on and see what civil construction trades actually do, as well as learn about all of the great career pathways that are available to you at BMD.

You'll walk away from the program with an industry white card and units of competencies transferable to certificates in civil construction. Successful completion of the program will see you considered for full-time employment with us; the first step in your career at BMD.

www.bmdgroup.global



SCAN THE QR CODE
TO LEARN MORE
AND APPLY



5-WEEK
PROGRAM



GET PAID TO
LEARN



GET TRANSFERABLE
QUALIFICATIONS



SUPPORTIVE FAMILY
VALUES ENVIRONMENT



OPEN DOOR TO 70+
CAREER PATHWAYS

Our Members

APA

AURIZON

CHARTERS TOWERS
REGIONAL COUNCIL

Cloncurry
Shire Council

Chatham | Rock Phosphate

NW
COMMERCE
North West

Coogee

concentis

CONNIE NAVARRO
LEGAL

Powerlink

COPPERSTRING 2032

Critical Minerals Group

CUSTOM STEEL FAB

DP ENERGY

DYNO
NOBEL

Evolution
MINING

ERGON
ENERGY
NETWORK
Part of Energy Queensland

SHIRE OF
FLINDERS

MOUNT ISA
MINES
A GLENORE COMPANY

GHD

HARMONY

Iberdrola

JAMES COOK
UNIVERSITY
AUSTRALIA

MMG

MOUNT ISA
CITY COUNCIL

Mount Isa Water Board

MULTICOM
RESOURCES
Supporting Australian Innovation

McKinlay
SHIRE COUNCIL

PORT OF
TOWNSVILLE

potentia
energy

Premise
PART OF THE
AMEY GROUP

PRL
GROUP

QEM

QUBE

NSS

Queensland
Country
Bank

QPM
ENERGY

QueenslandRail

RAVENSWOOD GOLD

reX.

RICHMOND
VANADIUM
TECHNOLOGY

R

SLR

selectability
mental wellbeing and suicide prevention

RICHMOND SHIRE
COUNCIL

SOUTH32

Southern Gulf
NRM

sunwater

Sun
Metals

ARK
ENERGY CORPORATION

Thorburn Australia
Engineering Consultants

City of
Townsville

TOWNSVILLE
MARINE
LOGISTICS

29
Metals

WINDLAB

WULGURU TECHNICAL
SERVICES