

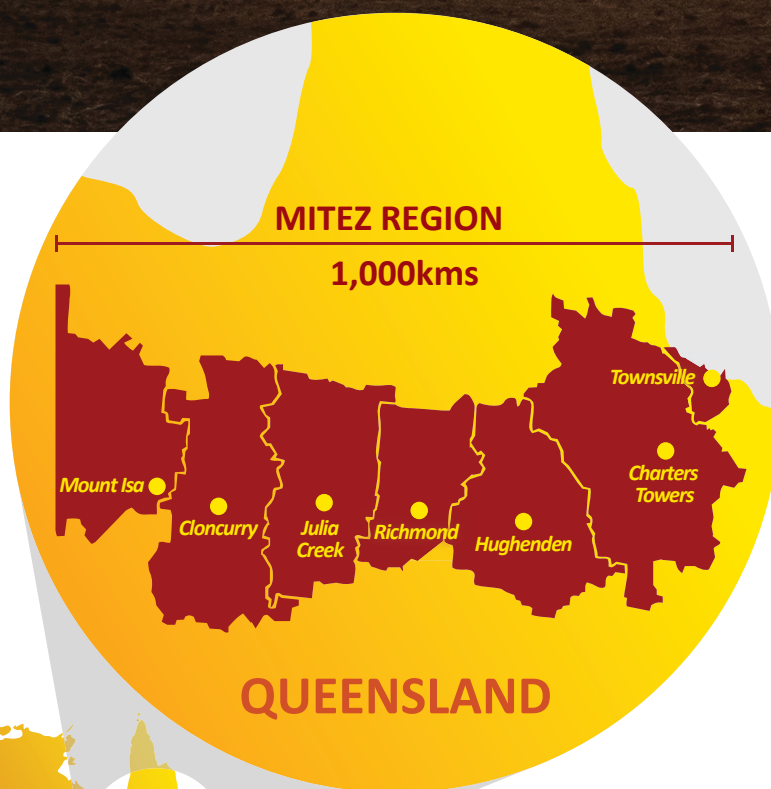
MOUNT ISA TO TOWNSVILLE ECONOMIC DEVELOPMENT ZONE

STRATEGIC PLAN
2022 - 2025



MITEZ

*The voice of the North West Corridor,
advocating for industry and its significant
economic impact on prosperity in the region.*



The Mount Isa to Townsville Economic Development Zone (MITEZ) is a regional organisation representing the industries and communities in Northern Australia's most important infrastructure corridor – the 900km between Mount Isa and Townsville.

Every year, the MITEZ region generates over \$16 billion in exports of minerals, manufactured metals and chemicals, food products, defence and transport services, contributing \$15 billion in Gross Regional Product.

MITEZ brings together local governments and industry to enable regional collaboration and present a united voice about the region's opportunities to investors and the Queensland and Australian Governments.



MITEZ VISION:

To be the peak economic advocacy voice in the North West corridor driving and facilitating a strong and globally competitive economy, with world-class infrastructure and liveability for our communities, through strategic alliances, collaboration and inclusive engagement.

MITEZ VALUES:

The following represent MITEZ's Values

- ✓ Professionalism
- ✓ Collaboration
- ✓ Tireless pursuit of outcomes.

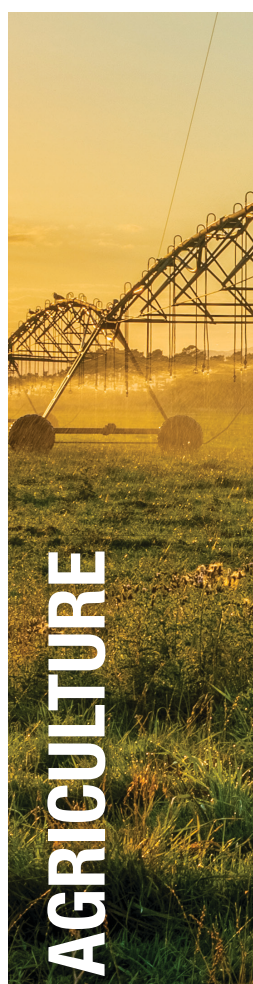
MITEZ MISSION:

To deliver optimal-impact, sustainably-sound, economic growth initiatives that will create employment opportunities and raise prosperity for our region, through:

- ✓ Economic and strategic leadership
- ✓ Political advocacy
- ✓ Engaged and collaborative partnerships
- ✓ Investment attraction
- ✓ Organisational best practice and continual improvement

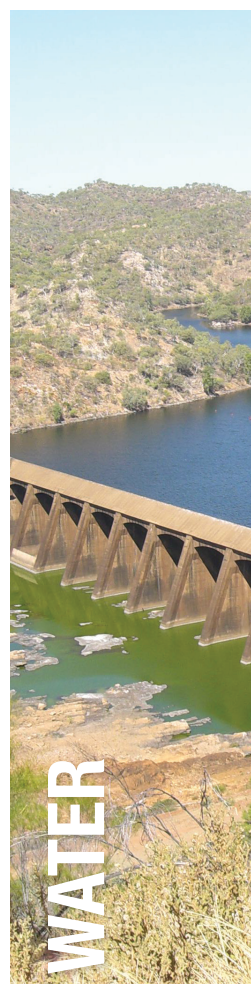
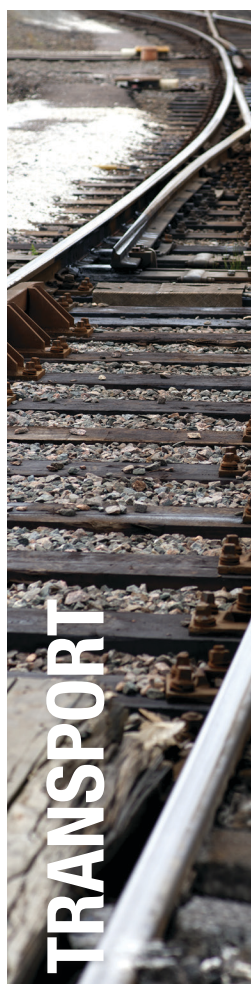
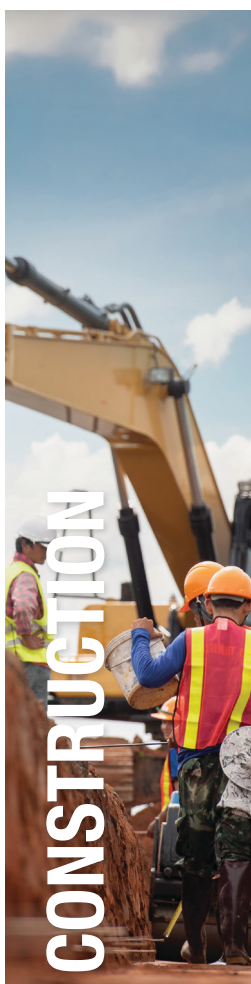
KEY ECONOMIC PILLARS

The MITEZ vision and mission will be achieved through focusing on region's economic pillars of:



ENABLING INDUSTRIES

Reasling growth in the key economic pillars requires development of enabling industries



THE MITEZ ECONOMY

MOUNT ISA CITY

CLONCURRY SHIRE

MCKINLAY SHIRE

RICHMOND SHIRE

WESTERN



2021 Population
22,931



GRP
\$2.4B
GRP/Capita
\$103,603



Median House Price
\$259,500
Average Rent
\$385/pw



2021 Population
15,051

KEY INDUSTRIES (VALUE OF EXPORTS)

Metal Ore Mining
\$4,228M
(69% of total)

Construction
\$235M
(4% of total)

**Chemical Product
Manufacturing**
\$198M
(3% of total)

**Transport &
Logistics**
\$144M
(2% of total)

**All other
industries**
\$1,366M
(22% of total)

Total Exports \$6,171B

TOWNSVILLE



2021 Population
195,515



GRP
\$14.2B
GRP/Capita
\$72,428



Median House
Price
\$382,000
Average Rent
\$390/pw

KEY INDUSTRIES (VALUE OF EXPORTS)

Defence
\$2,478M
(31% of total)

Metal Manufacturing
\$959M
(12% of total)

Construction
Services
\$795M
(10% of total)

Health Care
Services
\$676M
(8% of total)

Retail Trade
\$499M
(6% of total)

All other
industries
\$2,647M
(33% of total)

Total Exports \$8,055B

MID-WEST



GRP
\$1.2B
GRP/Capita
\$80,061



Median House Price
\$139,375
Average Rent
\$260/pw

KEY INDUSTRIES (VALUE OF EXPORTS)

Metal Ore Mining
\$1,148M
(49% of total)

Agriculture
\$353M
(15.0% of total)

Construction
\$157M
(7% of total)

Transport &
Logistics
\$65M
(3% of total)

All other
industries
\$638M
(27% of total)

Total Exports \$2,360B

MITEZ MAP OF THE REGION



PILLARS

AGRICULTURE

- 🏠 Saleyards, Charters Towers & Hughenden, Richmond
- 🐄 Abattoir, Townsville
- 🌾 Cotton gin, Julia Creek (proposed)
- 🌱 Proposed Irrigation areas
- 🟢 Phosphate Deposits

RESOURCES

- ⛏️ Mines
- 🟡 Deposits
- 🏭 Manufacturing Facility

DEFENCE

- 🏠 Lavarack Barracks, Townsville
- ✈️ RAAF Base, Townsville
- 🚗 Training areas
- 🚁 Drone Testing Facility, Cloncurry
- 🏠 Defence Sites

TOURISM

- 🌳 National Parks
- 🦕 Fossil Sites
- 🚢 Cruise Ship Terminal, Townsville

INFRASTRUCTURE

TRANSPORT

- 🛣️ Highways
- 🚢 Port of Townsville
- 🚆 Rail
- 🚆 Rail (Proposed)
- ✈️ Airports

WATER

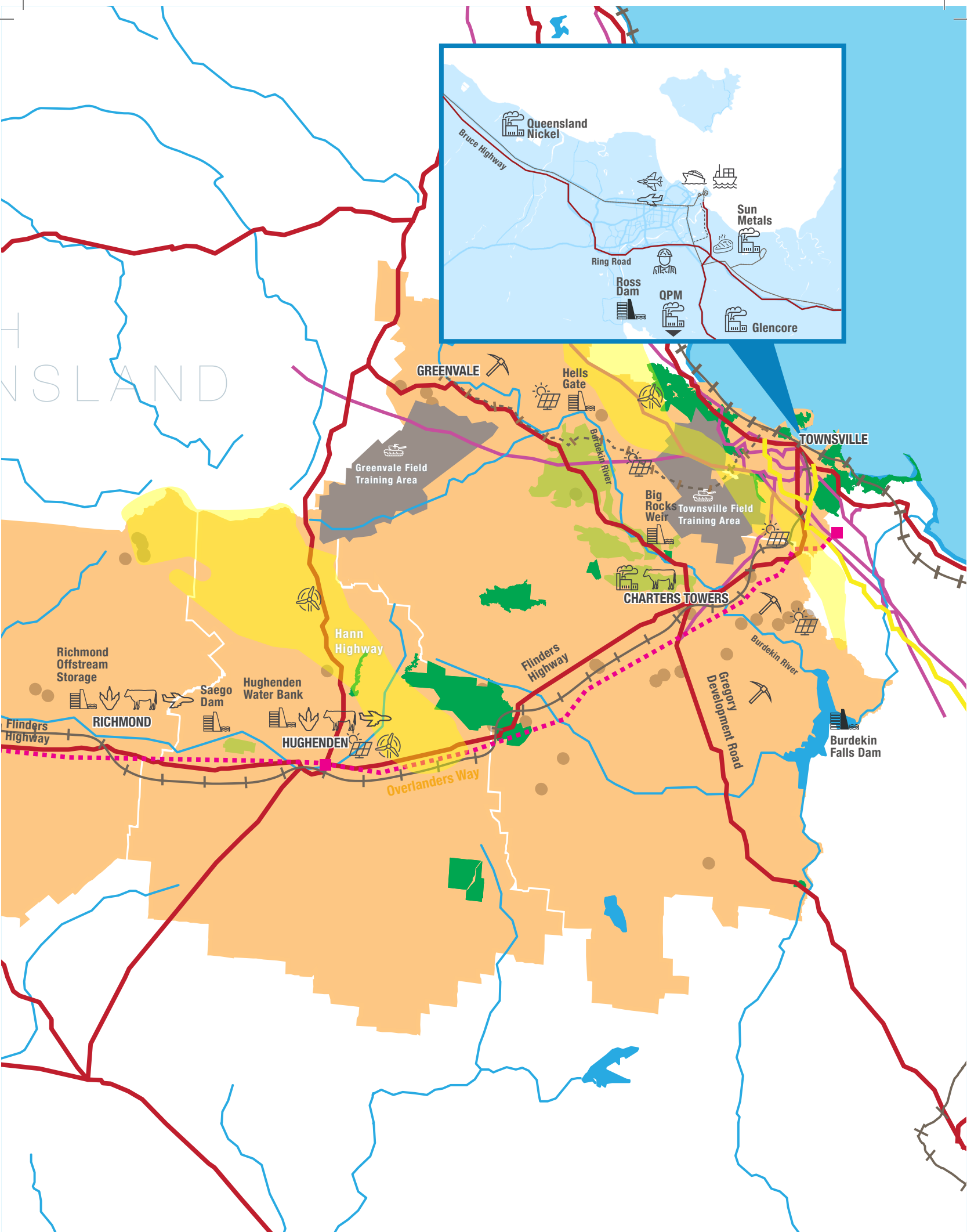
- 🏠 Dams (current)
- 🏠 Dams (proposed)
- 💧 Water Pipelines
- 🌊 Waterways

ENERGY

- 🏠 Generators
- ⚡ Transmission (current)
- ⚡ Transmission (proposed)
- 🔌 Gas Pipeline (current)
- 🔌 Gas Pipeline (proposed)
- 💨 Wind Resources

NORTHERN TERRITORY

NORTH QUEENSLAND



MITEZ FUTURE FOCUS

01



Developing regional plans to capitalise on economic growth opportunities.

03



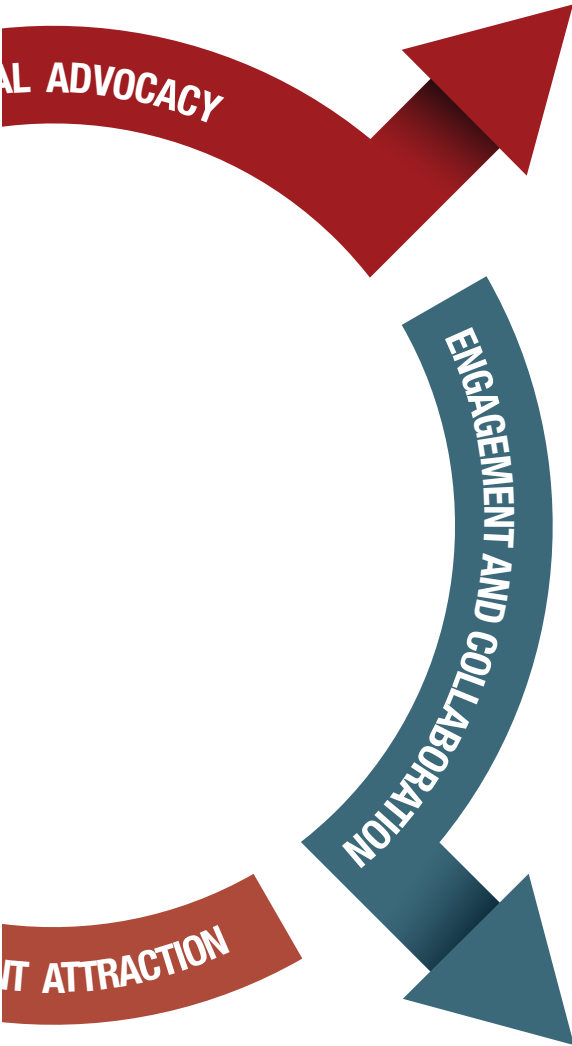
Driving regional investment attraction efforts for the region's economic pillars.



S & PRIORITIES

02

Leading regional engagement efforts with the Australian and Queensland Governments.



04

Growing the MITEZ membership base and facilitating member-to-member collaboration in pursuing economic outcomes.



MITEZ REGIONAL

PRIORITIES

OBJECTIVE

ACTIVITIES



INFRASTRUCTURE

Efficient, cost effective, game changing regional infrastructure



Advocate for improved freight handling efficiency and cost effectiveness on the Mt Isa line



Support first and last mile logistics projects in terms of road and rail



Advocate for water infrastructure for irrigated agriculture and any associated common user storage, sorting and processing infrastructure



Advocate for common user infrastructure to facilitate the integration of energy and mining activities.



ENERGY

Regional connection to NEM together with renewable energy opportunities



Advocate for the development of the region's energy supply and transmission



Support lower energy costs and reduced carbon emission energy projects



Support responsible and sustainable renewable energy projects.



NEW ECONOMY MINERALS

Mining and metal processing opportunities to meet global demand in transition to decarbonisation



Support emerging new economy projects



Advocate for investment into new economy minerals



Support common user mineral processing facilities



Support renewable investment and transmission infrastructure to facilitate domestic mineral processing



Advocate for efficient supply chains to domestic and international markets.

OUTCOMES

PRIORITIES

OBJECTIVE

ACTIVITIES



DIVERSIFICATION

High value dry land and irrigated cropping, fodder, feedlot and meat processing ventures, manufacturing opportunities



Support shifts from traditionally grown to more profitable crops as well as expansion of farming activities



Support projects that mitigate the effect of climate change on yield and quality of regional crops



Support production of high quality agricultural export products, value adding and access to international markets.



Advocate for value add manufacturing and processing opportunities.



TOURISM

Focus on outback experience, indigenous culture and drive tourism



Support local government tourism projects



Assist with the delivery of tourism packages, campaigns and product development in partnership with industry



Advocate for funds and investment into Outback Queensland tourism.





MEASURING SUCCESS

MITEZ'S SUCCESS WILL BE MEASURED IN THE FOLLOWING WAYS:

- ✓ **Performance:** Measured by delivery of specified tasks in the Strategic Plan
- ✓ **Effectiveness:** Measured by the achievement of outcomes sought
- ✓ **Impact:** measured by a change in:
 - ✓ Employment (FTE)
 - ✓ Gross Regional Product
 - ✓ Economic Diversity
 - ✓ Population
 - ✓ Net Migration
 - ✓ Port Throughput



For more information, please contact:

Maria James

Chief Executive Officer

M: 0499 492 094

E: ceo@mitez.com.au

Jennifer Vrana

Executive Officer

M: 0450 604 369

E: eo@mitez.com.au

